

SWEET-ORR

WE NEVER LET YOU DOWN



• EST 1871 •

WORKWEAR CATALOGUE

Contents

About Us	01
Fabrication Notes	02
Essential Workwear	03
High Visibility	27
Utility Casual	39
Medical	63
Winter	67
Specialised	77
Hospitality	93
Combat & Disaster	99
Contact Details	110

HARD WORKING. HARDWEARING.

SINCE 1871.

Sweet-Orr was founded in Wappingers Falls, New York by an Irish immigrant, James A. Orr and his nephews, Clayton E. and Clinton W. Sweet in 1871.

More than 140 years on, “**We never let you down**” remains our motto as we advance our dominant position as market leaders.

We understand that the toughest environments require the toughest garments. That is why we place continued emphasis on innovation, research and development, ensuring that our protective workwear always meets the highest standards.

Our products give you confidence to handle equipment with safety gear craftily engineered for the task. Garments are expertly designed and created by our highly skilled teams who have been sharing their artistry and devotion to hardwearing workwear since 1871.

SWEET-ORR
WE NEVER LET YOU DOWN



EST. 1871

SABS
ISO 9001



THE FABRIC

- Protection against fire hazards requires a very different fabric to that used for protection against acids.

OUR CONSTRUCTION

- Triple stitched lapped seams.
- Fully hemmed pockets, bar-tacked at stress points.
- Brass metal parts trims.
- Minimum of 12 stitches per cm around buttonholes.
- Reinforced buttonholes.

THE RIGHT CUT

- Garments are designed with a generous fit for maximum comfort.
- Safety is promoted and secured through sophisticated high-visibility additions and specialised workwear.
- Ruched waistbands eliminate belts and excess material.
- Press studs secure flaps instead of buttons.
- To accommodate women's varying body types, two-piece suits are sold separately. This provides the flexibility to wear different sized bottom and top for added comfort. Additional sizes can be ordered on request.

**Make the right choice with colours that suit your brand.
Find the right tone from our selection.**



STAND ASSURED.

Essential workwear is a basic requirement in achieving efficiency and productivity under hazardous, harsh and potentially dangerous environments. **Sweet-Orr** helps you find practical solutions in areas where safety may be compromised.

Tailoring to your industry's demanding requirements and regulations, no matter the job, our range will enable you to focus on the task at hand. Our in-depth understanding of the protective wear market gives you access to the best solutions in safety workwear suited to your specific environment.

Because no company should gamble on safety.





SUIT: 07101 / TOP: 07410 / TROUSERS: 07300

Men's Two Piece Continental Suit

SABS
ISO 9001

SABS
APPROVED
1928/2750



- Easy fitting long sleeve jacket with centre front zip
- Single breast pocket with flap and stud closure
- 2 patch pockets
- Trousers with 2 side pockets
- Hip and rule pockets
- Zip fly

Fabric

J54 - 100% Cotton

Sizes

72 - 172

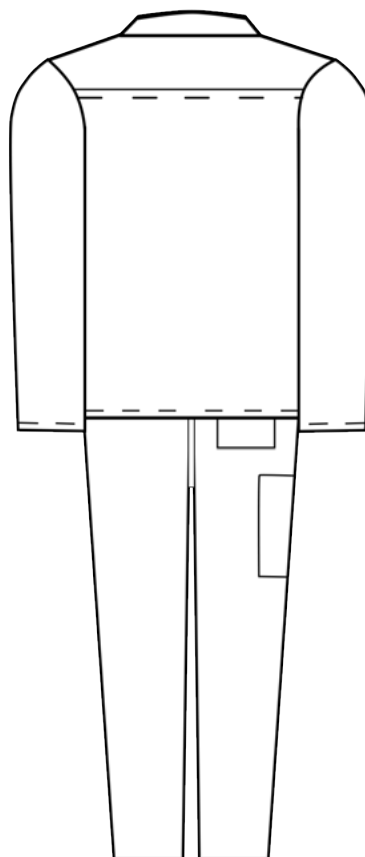
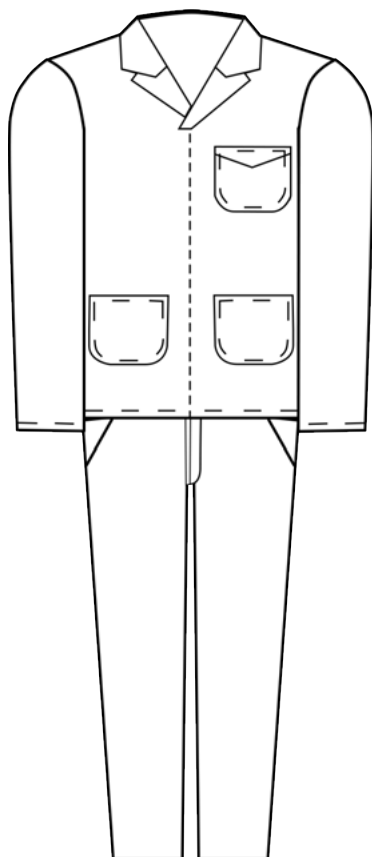
Weight

220gsm

Colours (13)

Royal Blue, Red, Yellow, Green, Grey, Navy, Black, White, Unbleached, Brown, Orange, Khaki, Emerald

Washing Instructions





SUIT: 06195 / TOP: 06496 / TROUSERS: 06367

Ladies' Two Piece Continental Suit

SABS
ISO 9001

SANS 1387



- Long sleeve zip through jacket with front yoke
- Bust darts with patch pockets
- Back darts and side vents
- Trousers have half elasticated waistband with zip fly and side entry pockets
- Side seams with triple needle stitch

Fabric

J54 - 100% Cotton

Sizes

67 - 127

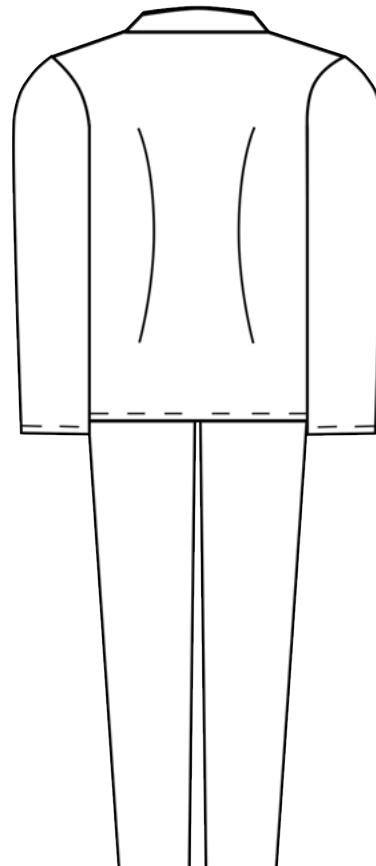
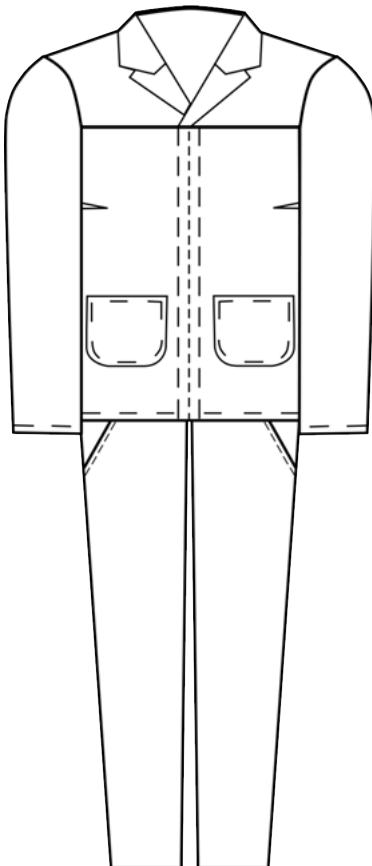
Weight

220gsm

Colours (13)

Royal Blue, Red, Yellow, Green, Grey, Navy, Black, White, Unbleached, Brown, Orange, Khaki, Emerald

Washing Instructions





SUIT: 06193 / TOP: 06403 / TROUSERS: 06371

Men's Two Piece Denim Continental Suit

SABS
ISO 9001



- Easy fitting long sleeve jacket with centre front zip
- Single breast pocket with flap and stud closure
- 2 patch pockets
- Trousers with 2 side pockets
- Hip and rule pockets
- Zip fly

Fabric

100% Cotton Denim

Sizes

72 - 172

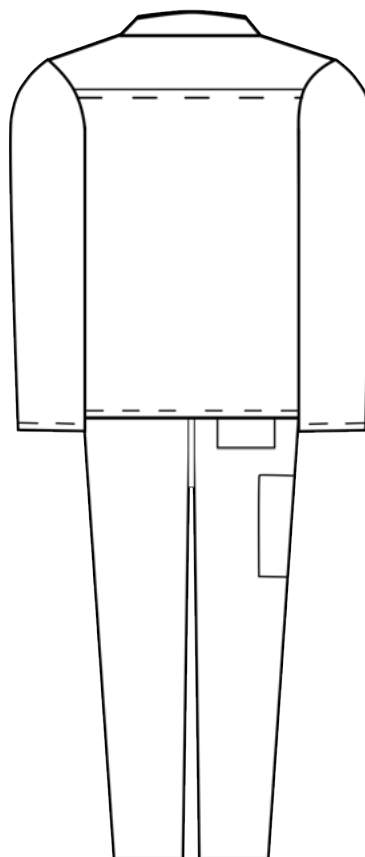
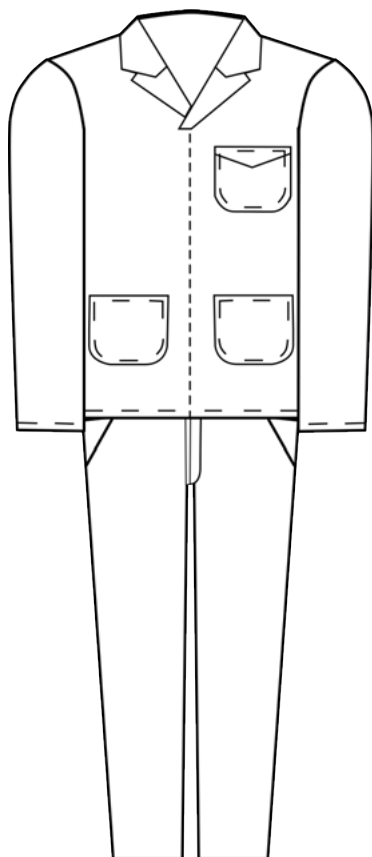
Weight

13oz

Colours (1)

Indigo Denim

Washing Instructions





SUIT: 06198 / TOP: 06601 / TROUSERS: 06370

Ladies' Two Piece Denim Continental Suit

SABS
ISO 9001



- Long sleeve zip through jacket with front yoke
- Bust darts with patch pockets
- Back darts and side vents
- Trousers have half elasticated waistband with zip fly and side entry pockets
- Side seams with triple needle stitch

Fabric

100% Cotton Denim

Sizes

67 - 127

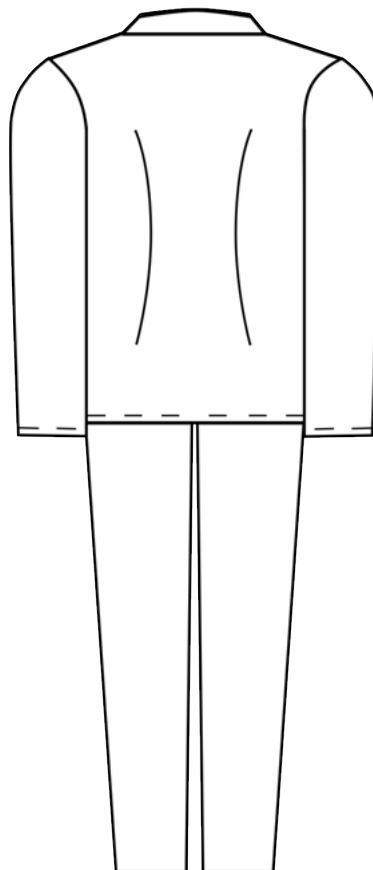
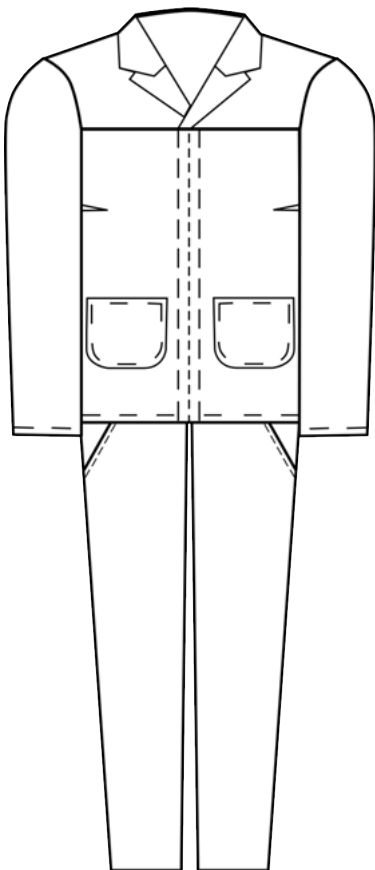
Weight

7oz

Colours (1)

Indigo Denim

Washing Instructions



SUIT: 07113 / TOP: 07469 / TROUSERS: 07385

Short Sleeve Two Piece Suit

SABS
ISO 9001

SANS 1387



- Easy fitting short sleeve jacket with centre front zip
- Single breast pocket with flap and stud closure
- 2 patch pockets
- Shorts with 2 side pockets
- Hip and rule pockets
- Zip fly

Fabric

J54 - 100% Cotton

Sizes

72 - 172

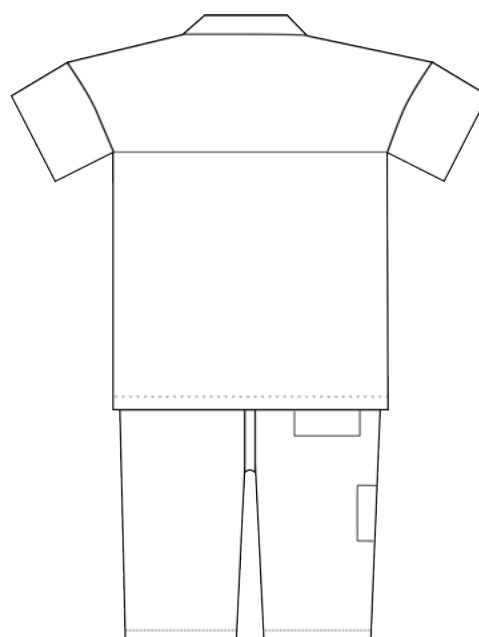
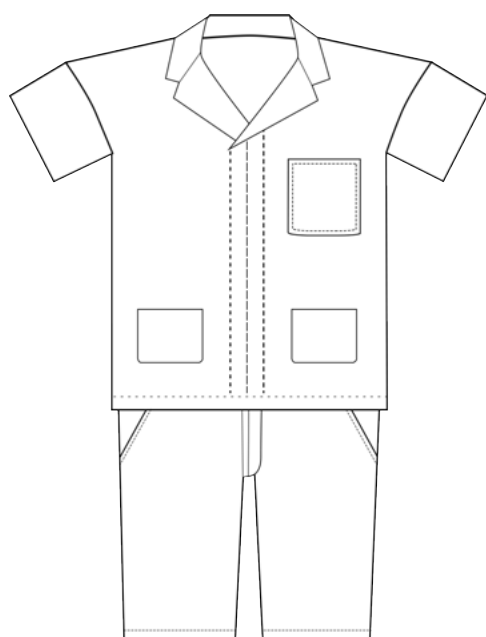
Weight

220gsm

Colours (13)

Royal Blue, Red, Yellow, Green, Grey, Navy, Black, White, Unbleached, Brown, Orange, Khaki, Emerald

Washing Instructions





04100

Artisan Suit

SABS
ISO 9001



- Long sleeve with hemmed cuffs
- Two breast pockets with flaps and stud closure
- Two side entry pockets with vents
- Hip and rule pockets
- Button fly
- Elasticated waist band on back

Fabric

J54 - 100% Cotton

Sizes

72 - 172

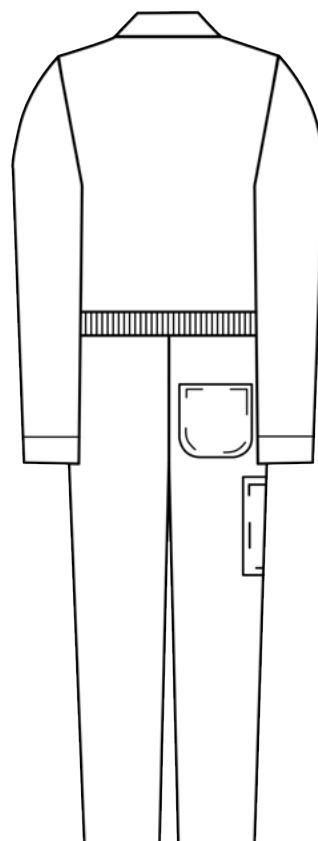
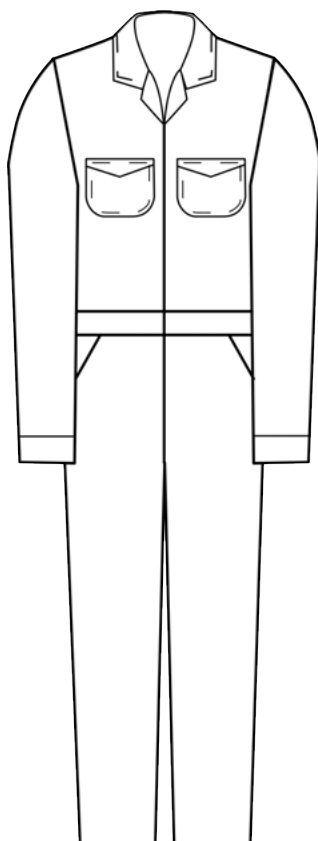
Weight

220gsm

Colours (13)

Royal Blue, Red, Yellow, Green, Grey, Navy, Black, White, Unbleached, Brown, Orange, Khaki, Emerald

Washing Instructions





04102

Engineer's Suit

SABS
ISO 9001

SABS
APPROVED
1928/2750



- Long sleeve with elasticated cuffs
- Two breast pockets with flaps and stud closure
- Two side entry pockets with vents
- Hip and rule pockets
- Double slider zip fly
- Elasticated waist band on back

Fabric

J54 - 100% Cotton

Sizes

72 - 172

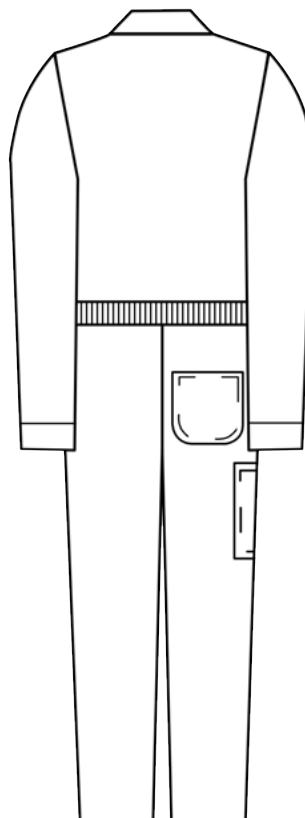
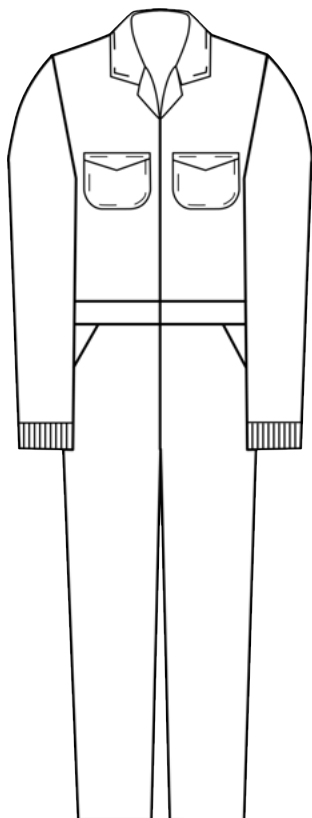
Weight

220gsm

Colours (13)

Royal Blue, Red, Yellow, Green, Grey, Navy, Black, White, Unbleached, Brown, Orange, Khaki, Emerald

Washing Instructions





04200

Utility Work Suit

SABS
ISO 9001

SABS
APPROVED
1928/2750



- Long sleeve with hemmed cuffs
- Single breast pocket with pencil division
- Side seam vents
- Hip pocket
- Button fly
- Elasticated waist band on back

Fabric

J54 - 100% Cotton

Sizes

72 - 172

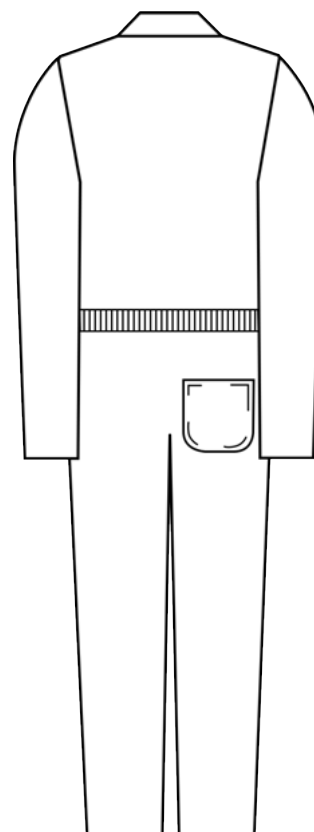
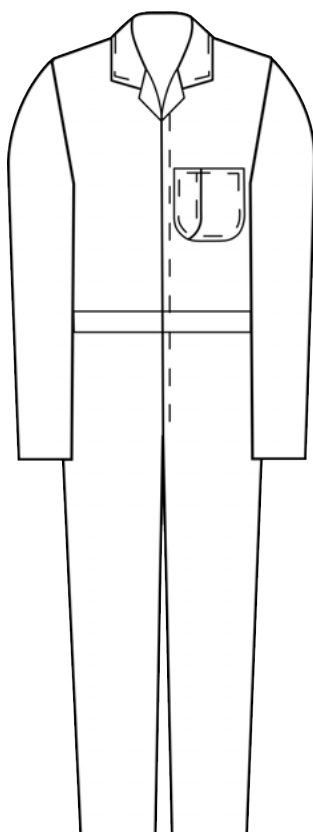
Weight

220gsm

Colours (13)

Royal Blue, Red, Yellow, Green, Grey, Navy, Black, White, Unbleached, Brown, Orange, Khaki, Emerald

Washing Instructions





SUIT: 07181 / TOP: 07630 / TROUSERS: 07316

Long Sleeve Two Toned Two Piece Suit

SABS
ISO 9001

SANS 1387



- Based on the Men's Long Sleeve Two Piece Continental Suit with variations of colours and pockets

Fabric

J54 - 100% Cotton

Sizes

72 - 172

Weight

220gsm

Colours (13)

Royal Blue, Red, Yellow, Green, Grey, Navy, Black, White, Unbleached, Brown, Orange, Khaki, Emerald

Washing Instructions



HOT
WASH



DO NOT
BLEACH



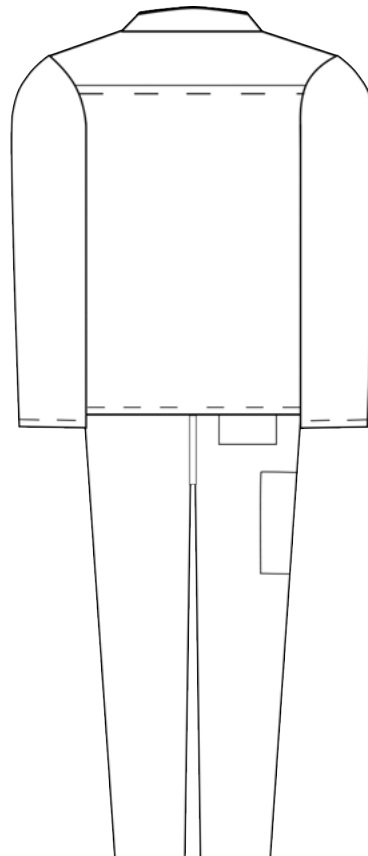
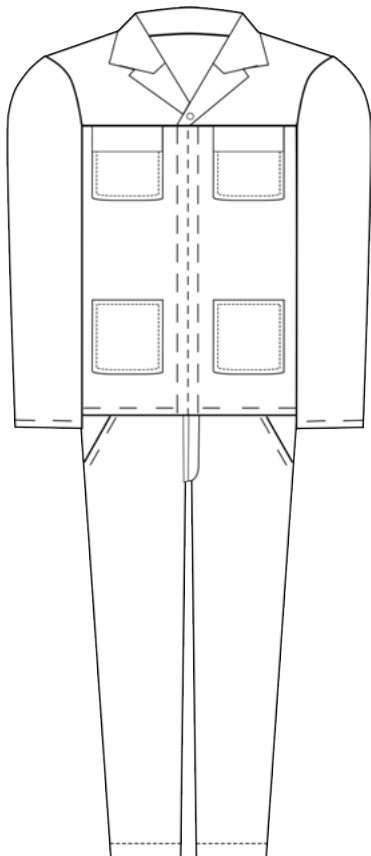
WARM IRON
WHEN DAMP



DRY
CLEANABLE



DO NOT
TUMBLE DRY





SUIT: 07703 / TOP: 07525 / TROUSERS: 07385

Short Sleeve Two Toned Two Piece Suit

SABS
ISO 9001

SANS 1387



- Based on the Short Sleeve Two Piece Continental Suit with variations of colour

Fabric

J54 - 100% Cotton

Sizes

72 - 172

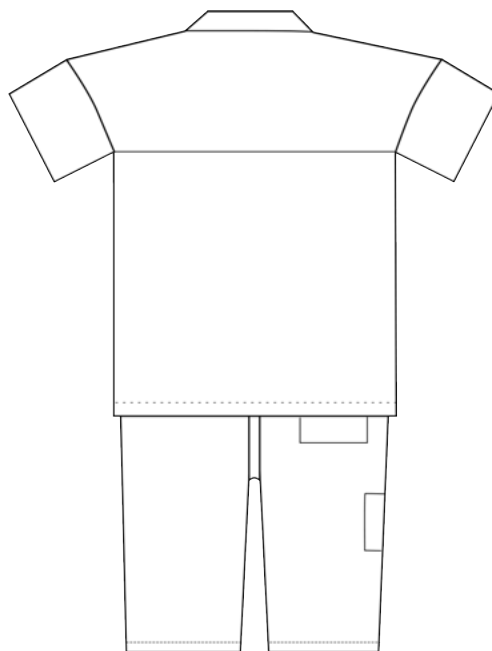
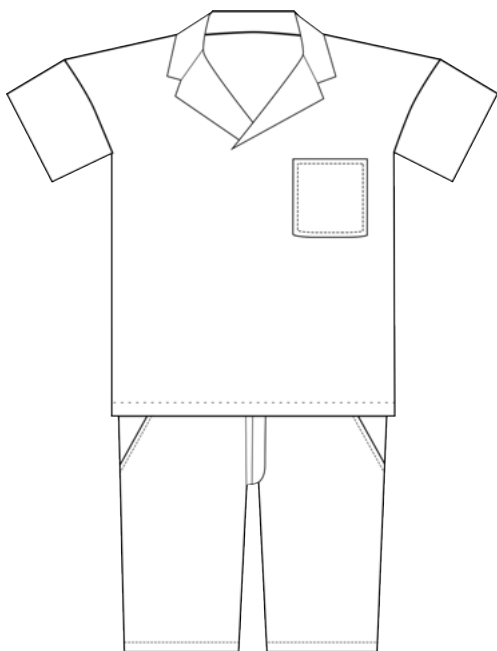
Weight

220gsm

Colours (13)

Royal Blue, Red, Yellow, Green, Grey, Navy, Black, White, Unbleached, Brown, Orange, Khaki, Emerald

Washing Instructions





30635

Long Sleeve Dustcoat with Press Stud Closure

SABS
ISO 9001

SANS 1387



- Left hand wearing breast pocket
- Two large patch pockets
- Two side slits
- Concealed placket with press stud closure

Fabric

J54 - 100% Cotton

Sizes

72 - 172

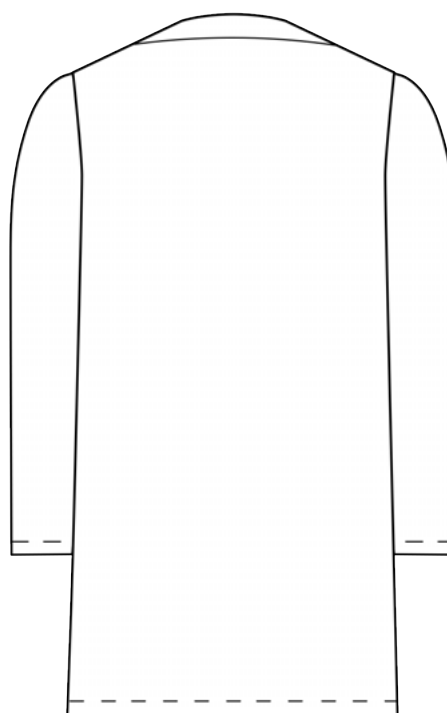
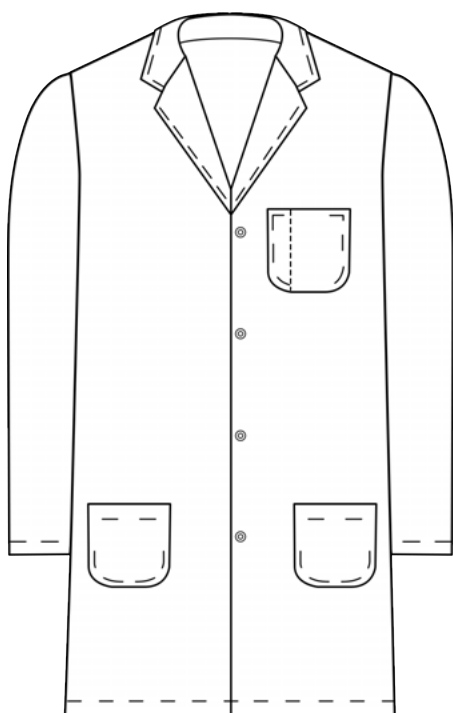
Weight

220gsm

Colours (13)

Royal Blue, Red, Yellow, Green, Grey, Navy, Black, White, Unbleached, Brown, Orange, Khaki, Emerald

Washing Instructions





30800

Long Sleeve Dustcoat with Button Closure

SABS
ISO 9001

SANS 1387



- Long sleeve with single breast pocket
- Two front patch pockets
- Centre back seam with vent

Fabric

J54 - 100% Cotton

Sizes

67 - 127 / 72 - 172

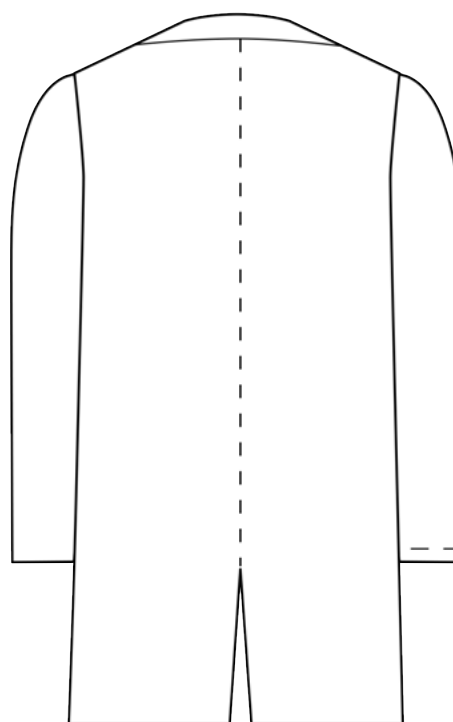
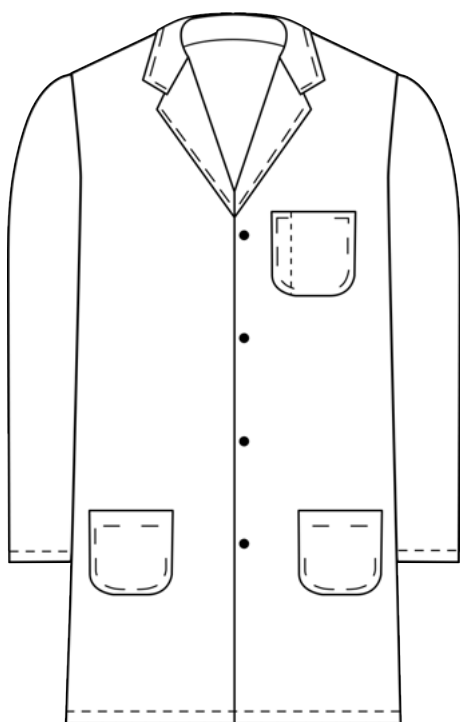
Weight

220gsm

Colours (13)

Royal Blue, Red, Yellow, Green, Grey, Navy, Black, White, Unbleached, Brown, Orange, Khaki, Emerald

Washing Instructions





40215

Ladies' Short Sleeve Overall

SABS
ISO 9001



- Left hand wearing breast pocket
- Two large patch pockets
- Plastic button closure
- Breast darts

Fabric

100% Cotton

Sizes

S - 3XL

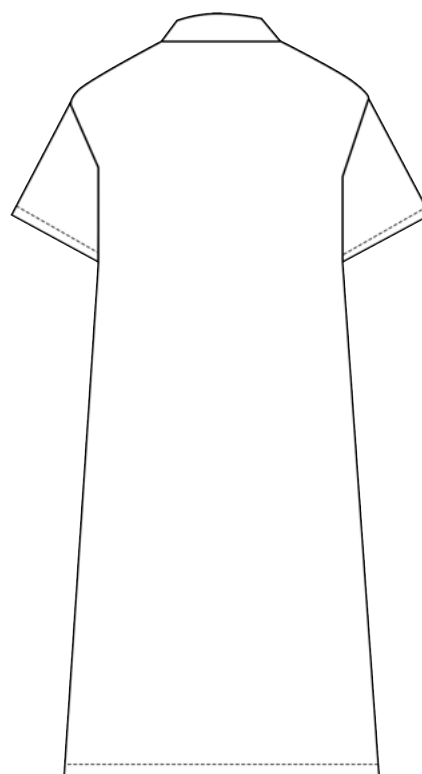
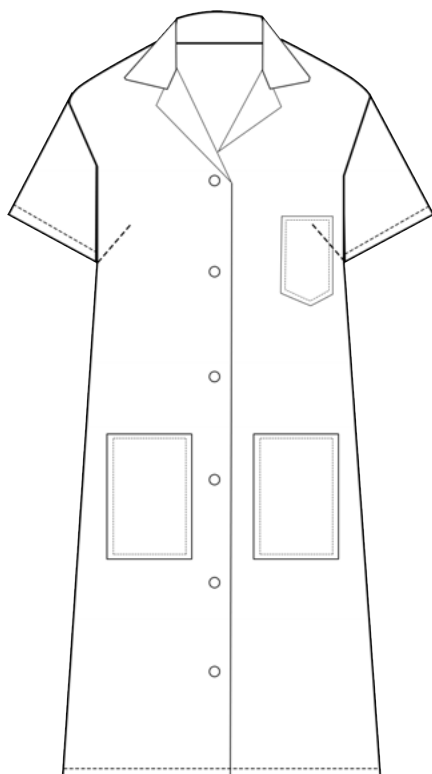
Weight

185gsm

Colours (5)

Pink, Green, Blue, White, Navy

Washing Instructions





37206

Full Length Bib Apron

SABS
ISO 9001



- Full bib with waist tie
- Front patch pocket

Fabric

100% Cotton

Sizes

One Size

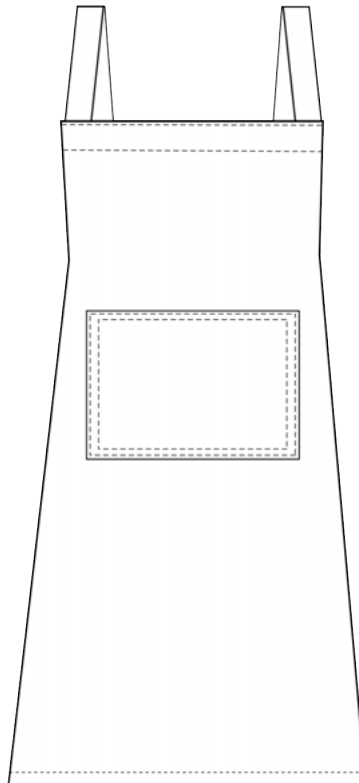
Weight

185gsm

Colours (5)

Pink, Green, Blue, White, Navy

Washing Instructions



37207 / APRON AND HEAD GEAR

Half Apron and Head Gear

SABS
ISO 9001



- Half apron with waist tie
- Front patch pocket
- Head cover

Fabric

100% Cotton

Sizes

One Size

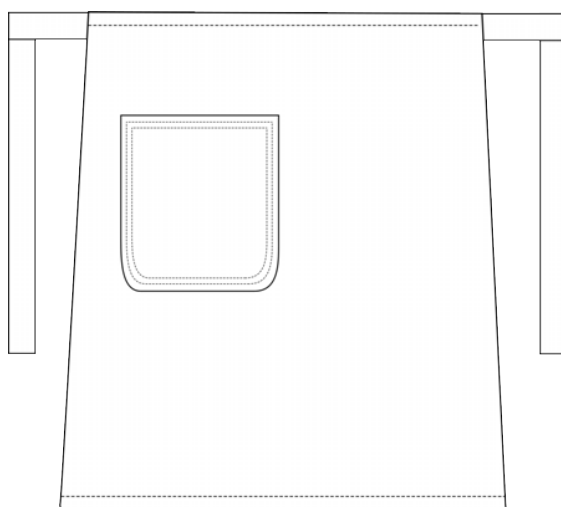
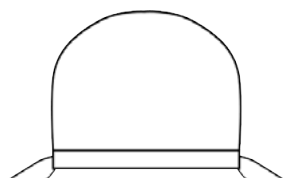
Weight

185gsm

Colours (5)

Pink, Green, Blue, White, Navy

Washing Instructions







37207 / FULL APRON

Full Length Denim Bib Apron

SABS
ISO 9001



- Full bib with waist tie
- Front patch pocket

Fabric

100% Cotton Denim

Sizes

One Size

Weight

13oz

Colours (1)

Denim

Washing Instructions

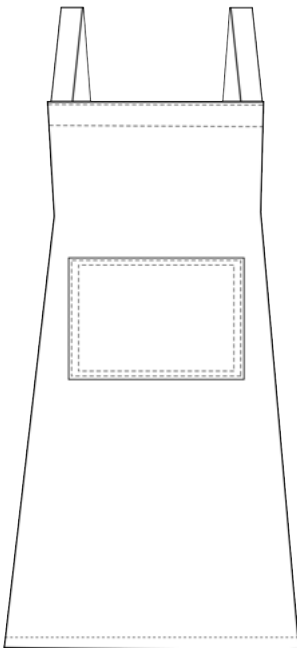
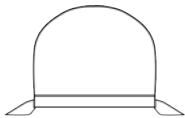
HOT WASH

DO NOT BLEACH

WARM IRON WHEN DAMP

DRY CLEANABLE

DO NOT TUMBLE DRY



37208 / APRON

Half Denim Apron



SABS
ISO 9001



- Half apron with waist tie
- Front patch pocket

Fabric

100% Cotton Denim

Sizes

One Size

Weight

13oz

Colours (1)

Denim

Washing Instructions



HOT
WASH



DO NOT
BLEACH



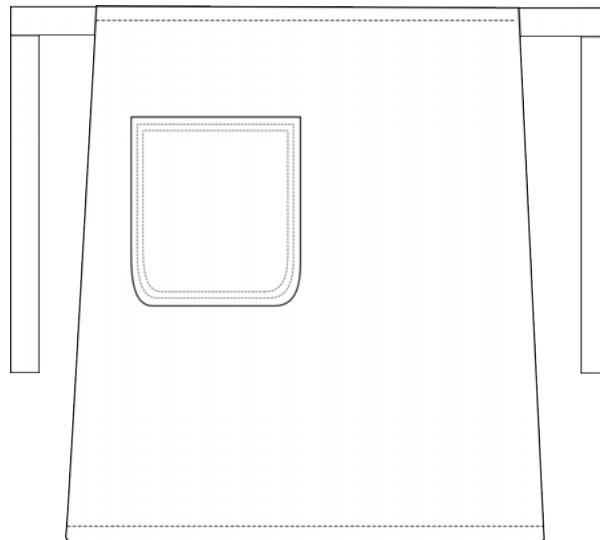
WARM IRON
WHEN DAMP



DRY
CLEANABLE



DO NOT
TUMBLE DRY



07456

Men's Chore Jacket with 1/4 Back Elastic

SABS
ISO 9001

SANS 1387



- Long sleeve with elasticated cuffs
- 1/4 back elastic on waistband
- Single breast pocket
- Two patch pockets

Fabric

J54 - 100% Cotton

Sizes

72 - 172

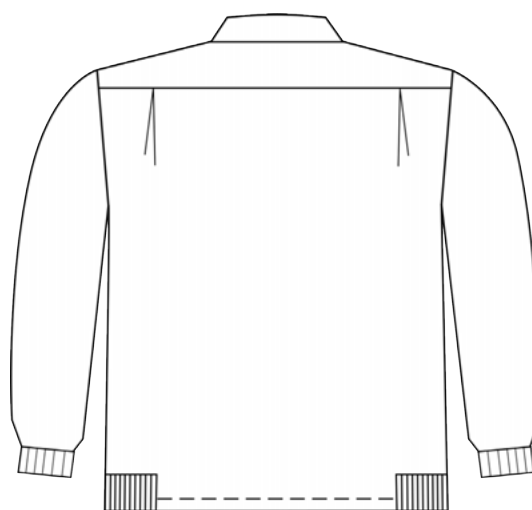
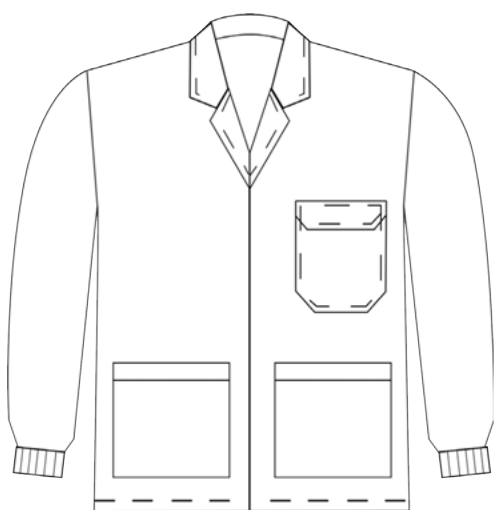
Weight

220gsm

Colours (5)

White, Black, Khaki, Navy, Grey

Washing Instructions





01110

Men's Denim Bib and Brace

SABS
ISO 9001



- Bib pocket
- 2 side pockets
- 1 back pocket
- 1 rule pocket and hammer loop optional

Fabric

100% Cotton Denim

Sizes

72 - 172

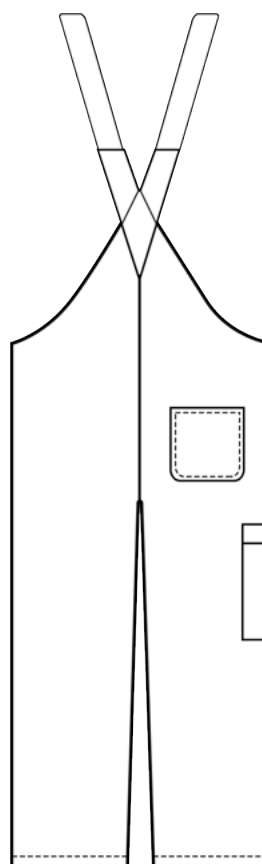
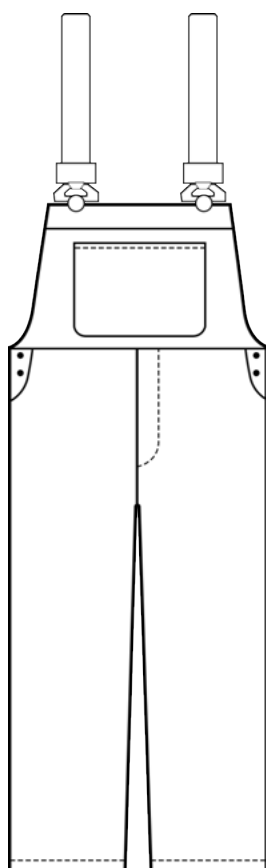
Weight

7oz

Colours (1)

Dark wash Denim

Washing Instructions





01109

Men's Bib and Brace

SABS
ISO 9001

SANS 1387



- Bib pocket
- 2 side pockets
- 1 back pockets
- Optional zip or butterfly
- Hammerloop optional

Fabric

J54 - 100% Cotton

Sizes

72 - 172

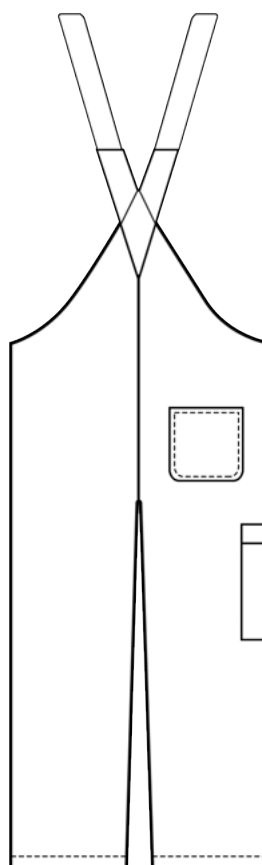
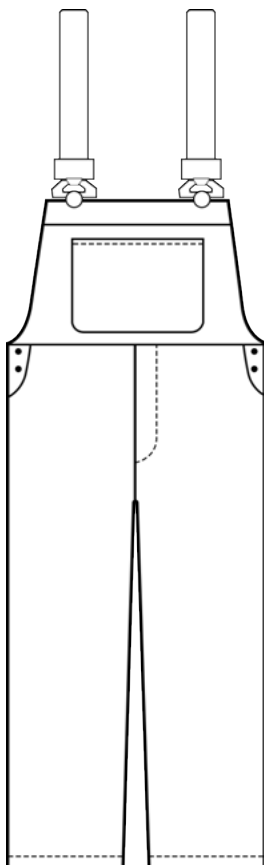
Weight

220gsm

Colours (13)

Royal Blue, Red, Yellow, Green, Grey, Navy, Black, White, Unbleached, Brown, Orange, Khaki, Emerald

Washing Instructions





BE SEEN. NOT HURT.

Our High Visibility workwear is fitted with reflective tape, ensuring that whether in low-light conditions or a busy environment, you will constantly be in view of others.

These reflective wear designs meet stringent specifications, additionally we ensure every garment is made to fit the occasion, from pants, overalls to jackets.



SUIT: 07164 / TOP: 07616 / TROUSERS: 07390

Men's Long Sleeve Continental Suit

SABS
ISO 9001

SABS
APPROVED
1928/2750



- Easy fitting long sleeve jacket with centre front zip
- Single breast pocket with flap and stud closure
- 2 patch pockets
- Trousers with 2 side pockets
- Hip and rule pockets
- Zip fly
- High Visibility tape variations

Fabric

J54 - 100% Cotton

Sizes

72 - 172

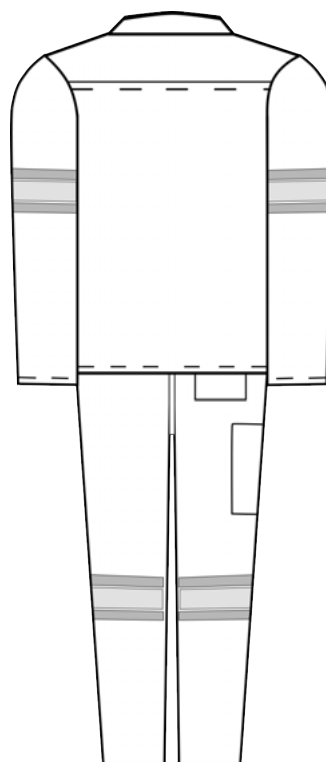
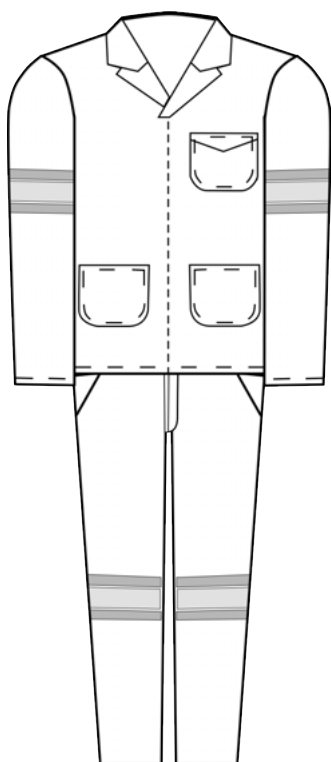
Weight

220gsm

Colours (13)

Royal Blue, Red, Yellow, Green, Grey, Navy, Black, White, Unbleached, Brown, Orange, Khaki, Emerald

Washing Instructions





SUIT: 06195 / TOP: 06489 / TROUSERS: 06365

Ladies' Long Sleeve Continental Suit

SABS
ISO 9001

SANS 1387



- Long sleeve zip through jacket with front yoke
- Bust darts with skirt pockets
- Back darts
- Trousers have half elasticated waistband with zip fly and side entry pockets
- Side seams with triple needle stitch
- High Visibility tape variations

Fabric

J54 - 100% Cotton

Sizes

67 - 127

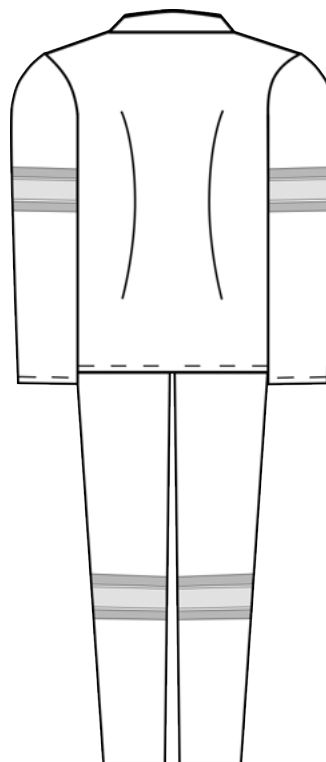
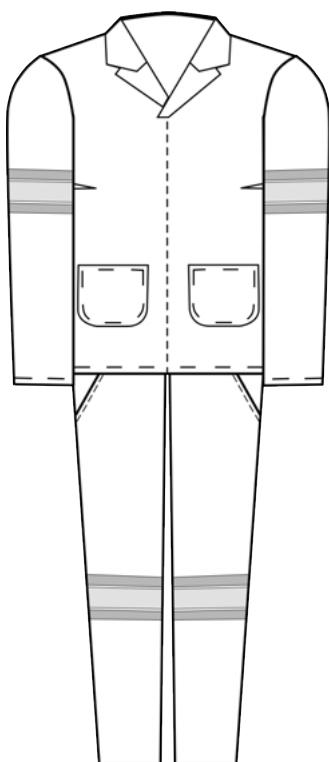
Weight

220gsm

Colours (13)

Royal Blue, Red, Yellow, Green, Grey, Navy, Black, White, Unbleached, Brown, Orange, Khaki, Emerald

Washing Instructions





SUIT: 06178 / TOP: 06473 / TROUSERS: 06362

Men's Long Sleeve Denim Two Piece Suit

SABS
ISO 9001



- Easy fitting long sleeve jacket with centre front zip
- Single breast pocket with flap and stud closure
- 2 patch pockets
- Trousers with 2 side pockets
- Hip and rule pockets
- Zip fly
- High Visibility tape variations

Fabric

100% Cotton Denim

Sizes

72 - 172

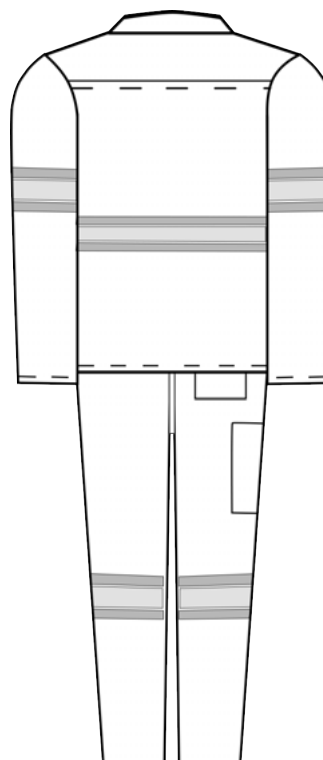
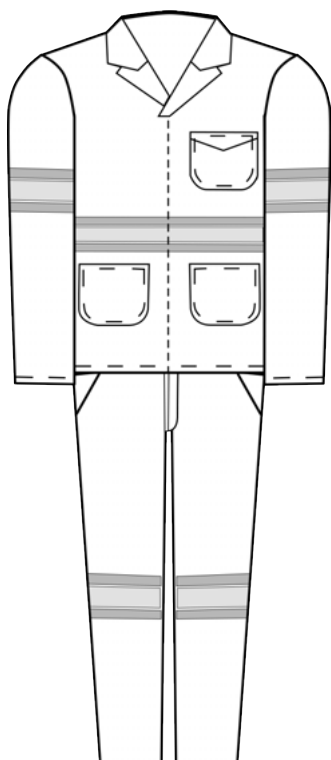
Weight

13oz

Colours (1)

Dark wash Denim

Washing Instructions



SUIT: 06190 / TOP: 06489 / TROUSERS: 06365

Ladies' Long Sleeve Denim Two Piece Suit

SABS
ISO 9001



- Long sleeve zip through jacket with front yoke
- Bust darts with skirt pockets
- Back darts
- Trousers have half elasticated waistband with zip fly and side entry pockets
- Side seams with triple needle stitch
- High Visibility tape variations

Fabric

100% Cotton Denim

Sizes

67 - 127

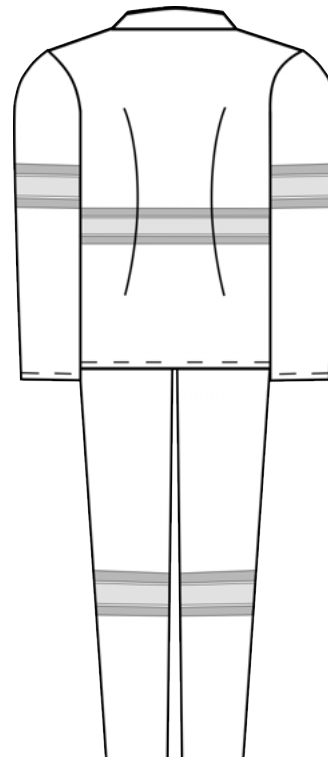
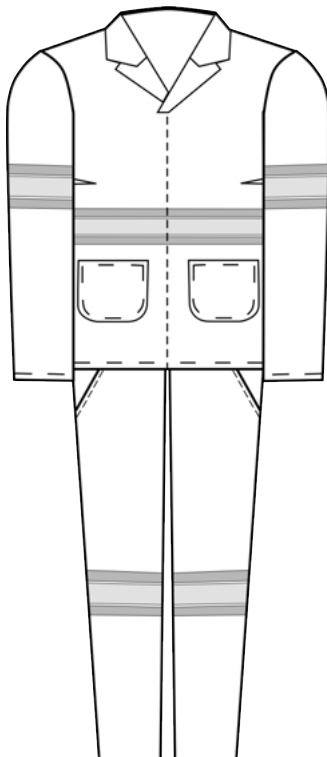
Weight

7oz

Colours (1)

Dark wash Denim

Washing Instructions





04100

Artisan Suit

SABS
ISO 9001

SABS
APPROVED
1928/2750



- Long sleeve with hemmed cuffs
- Two breast pockets with flaps and stud closure
- Two side entry pockets with vents
- Hip and rule pockets
- Button fly
- High Visibility tape variations

Fabric	Sizes	Weight
J54 - 100% Cotton	72 - 172	220gsm

Colours (13)
Royal Blue, Red, Yellow, Green, Grey, Navy, Black, White, Unbleached, Brown, Orange, Khaki, Emerald

Washing Instructions

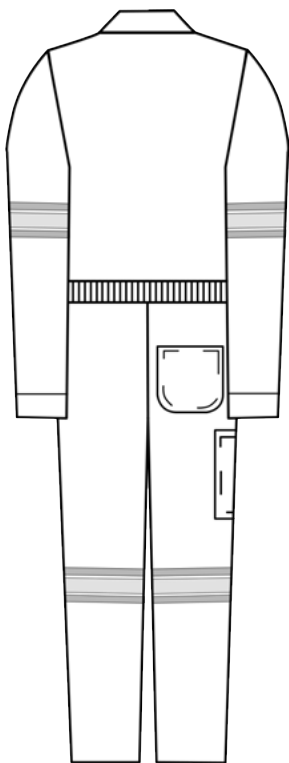
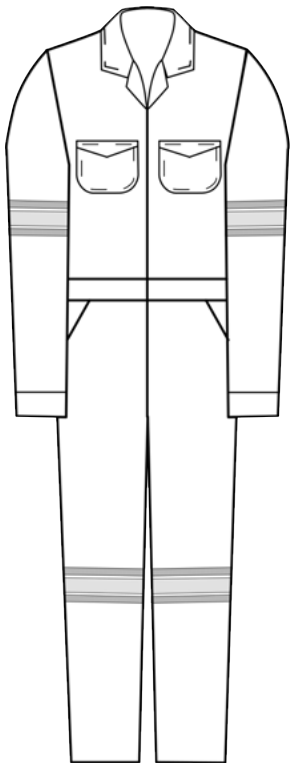
HOT WASH

DO NOT BLEACH

WARM IRON WHEN DAMP

DRY CLEANABLE

DO NOT TUMBLE DRY





04102

Engineer's Suit

SABS
ISO 9001



- Long sleeve with elasticated cuffs
- Two breast pockets with flaps and stud closure
- Two side entry pockets with vents
- Hip and rule pockets
- Double slider zip fly
- High Visibility tape

Fabric

J54 - 100% Cotton

Sizes

72 - 172

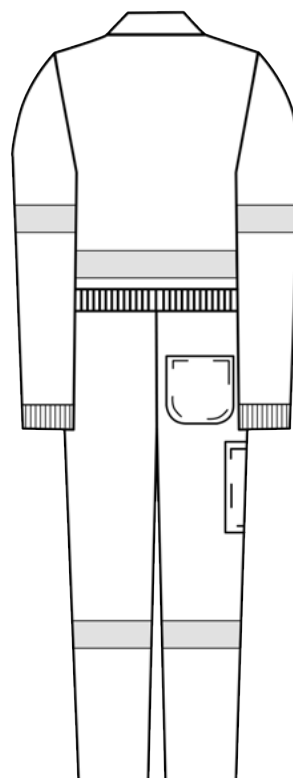
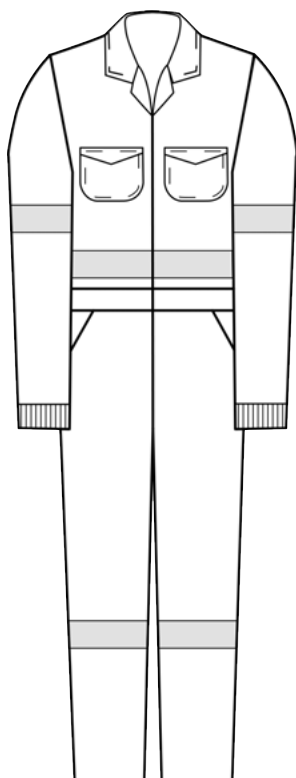
Weight

220gsm

Colours (13)

Royal Blue, Red, Yellow, Green, Grey, Navy, Black, White, Unbleached, Brown, Orange, Khaki, Emerald

Washing Instructions





SUIT: 06190 / TOP: 06496 / TROUSERS: 06367

Ladies' Two Piece High Visibility Continental Suit

SABS
ISO 9001

SANS 1387



- Long sleeve zip through jacket with front yoke
- Bust darts with patch pockets
- Back darts and side vents
- Trousers have half elasticated waistband with zip fly and side entry pockets
- Side seams with triple needle stitch
- High Visibility tape variations

Fabric

J54- 100% Cotton

Sizes

67 - 127

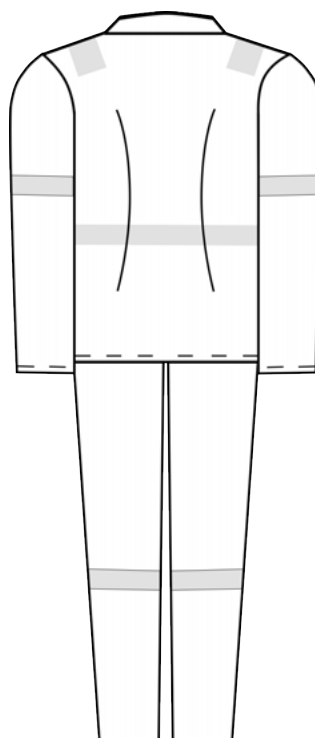
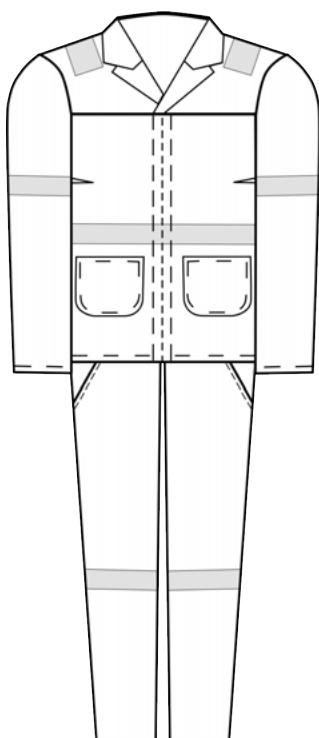
Weight

220gsm

Colours (1)

Lime Green

Washing Instructions







SUIT: 07101 / TOP: 07410 / TROUSERS: 07300

Men's High Visibility Continental Suit

SABS
ISO 9001

SABS
APPROVED
1928/2750



- Easy fitting long sleeve jacket with front zip
- Single breast pocket with flap and stud closure
- 2 patch pockets
- Trousers with 2 side pockets
- Hip and rule pockets
- Zip fly
- High Visibility tape variations

Fabric

J54 - 100% cotton

Sizes

72 - 172

Weight

220gsm

Colours (1)

Lime Green

Washing Instructions



HOT
WASH



DO NOT
BLEACH



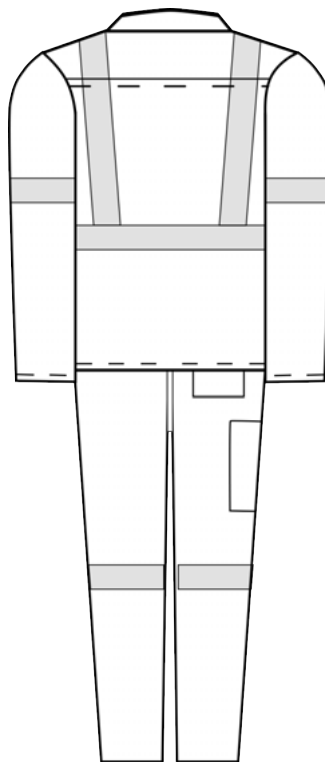
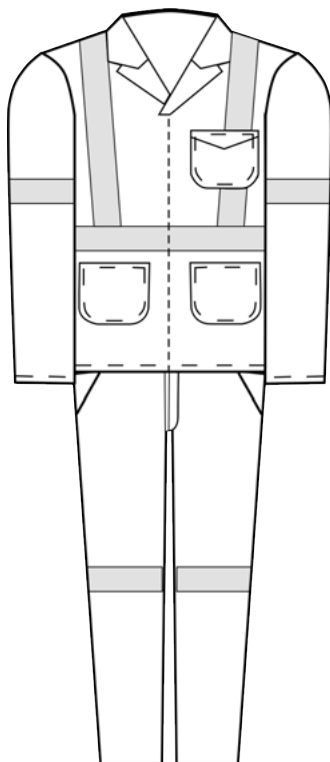
WARM IRON
WHEN DAMP



DRY
CLEANABLE



DO NOT
TUMBLE DRY





02200 / 04200

Utility Work Suit

SABS
ISO 9001

SANS 1387



- Long sleeve with hemmed cuffs
- Single breast pocket with pencil division
- Side seam vents
- Hip pocket
- Button fly
- High Visibility tape variations

Fabric

J54 - 100% Cotton

Sizes

72 - 172

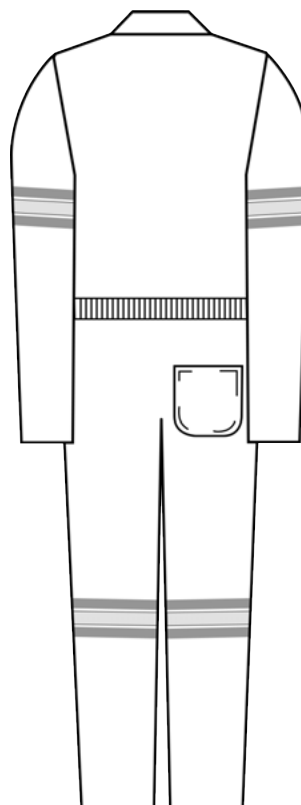
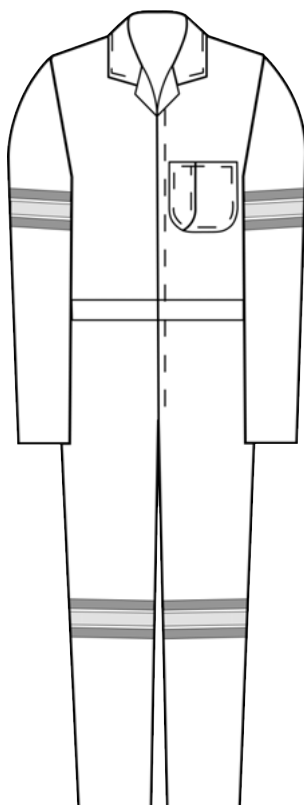
Weight

220gsm

Colours (13)

Royal Blue, Red, Yellow, Green, Grey, Navy, Black, White, Unbleached, Brown, Orange, Khaki, Emerald

Washing Instructions





A photograph of a residential outdoor space. In the foreground, there is a bed of dark, irregularly shaped rocks. To the left, a red brick path leads towards a white pillar. A large tree with green leaves is on the right. A silver metal drum is visible near the pillar. The background shows a white wall and a house.

WORK, MEETS LEISURE.

Some jobs call for workwear that not only offers protection and comfort, but also efficiency.

Our casual utility and denim pants, shorts and shirts are kitted with on-trend functional pockets to fit any occasion or need. They offer functionality and flexibility, ideal for changing environments and tasks.



50251

Men's Long Sleeve Denim Shirt with Glad Neck and Straight Hem

SABS
ISO 9001



- Long sleeve denim shirt with glad neck
- Cuffs with pigmented button closure
- 2 breast pockets with button down flaps

Fabric

100% Cotton Denim

Sizes

S - 3XL

Weight

7oz

Colours (2)

Dark Wash and Medium Wash

Washing Instructions



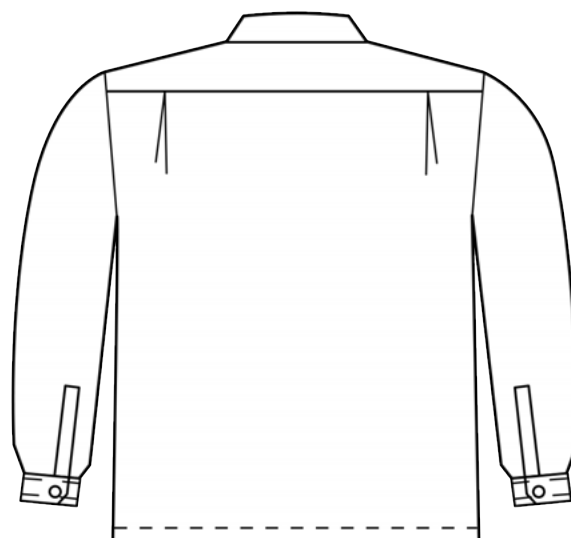
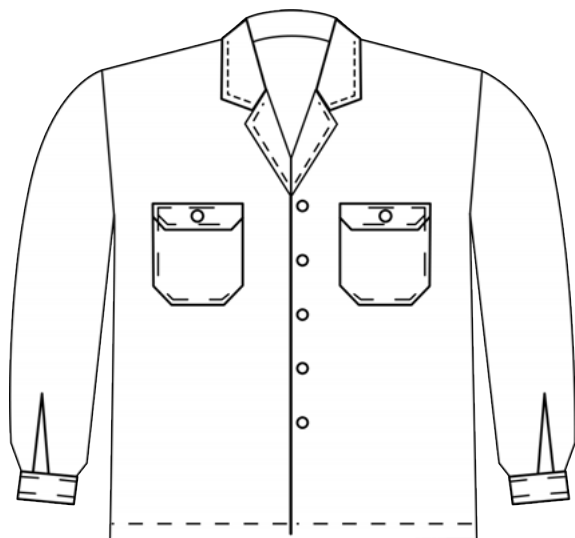
HOT
WASH

DO NOT
BLEACH

WARM IRON
WHEN DAMP

DRY
CLEANABLE

DO NOT
TUMBLE DRY





50272

Men's Long Sleeve Denim - Shirt Type Collar with Curved Hem

SABS
ISO 9001



- Long sleeve denim shirt with shirt collar
- Cuffs with pigmented button closure
- 2 breast pockets with button down flaps

Fabric

100% Cotton Denim

Sizes

S - 3XL

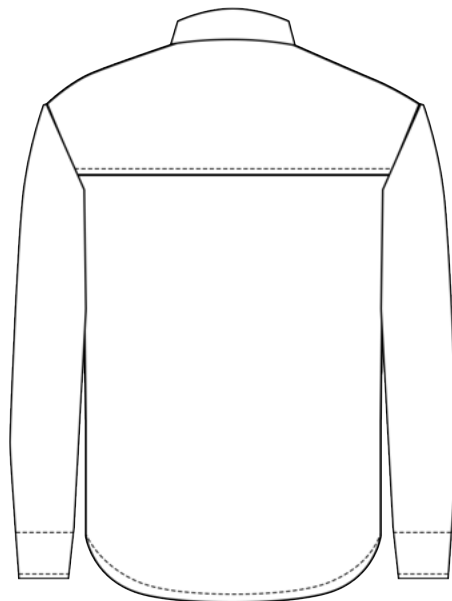
Weight

7oz

Colours (2)

Dark Wash and Medium Wash

Washing Instructions



50250

Men's Short Sleeve Denim Shirt with Glad Neck and Curved Hem

SABS
ISO 9001



- Short sleeve denim shirt with glad neck
- Button down placket
- 2 breast pockets with button down flaps

Fabric

100% Cotton Denim

Sizes

S - 3XL

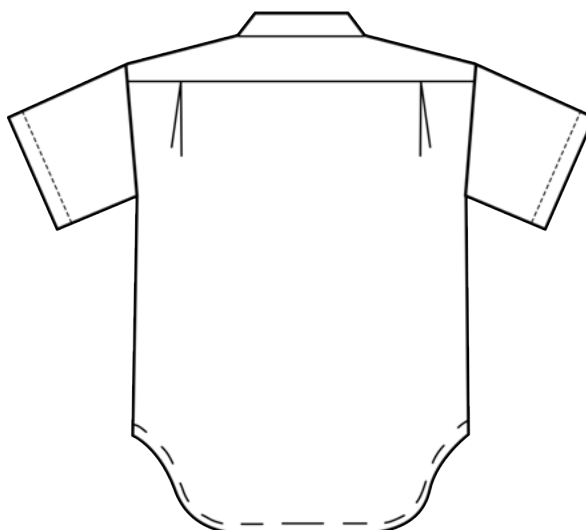
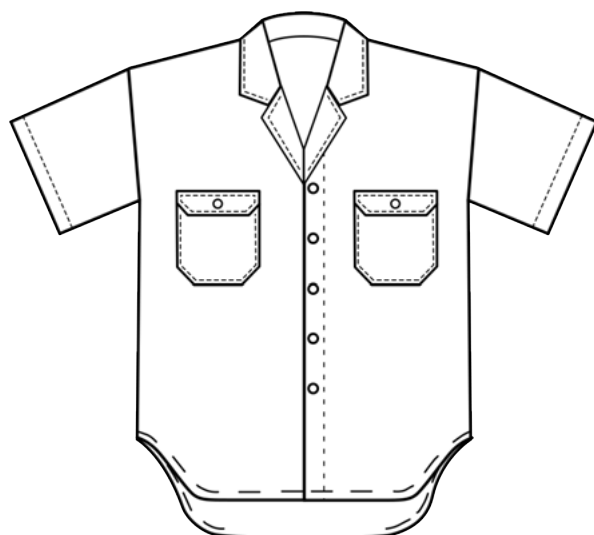
Weight

7oz

Colours (2)

Dark Wash and Medium Wash

Washing Instructions





11168

Men's Regular Fit Denim Jean Stonewash

SABS
ISO 9001



- Men's five pocket denim jean
- Zip fly
- Regular rise, relaxed from hip
- Beltloops

Fabric

100% Cotton Denim

Sizes

72 - 172

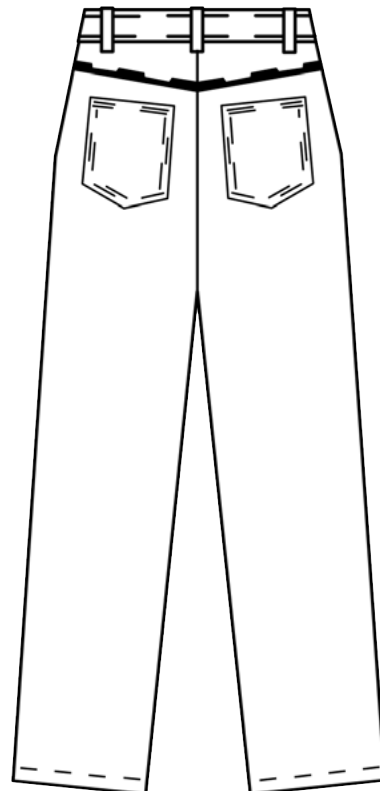
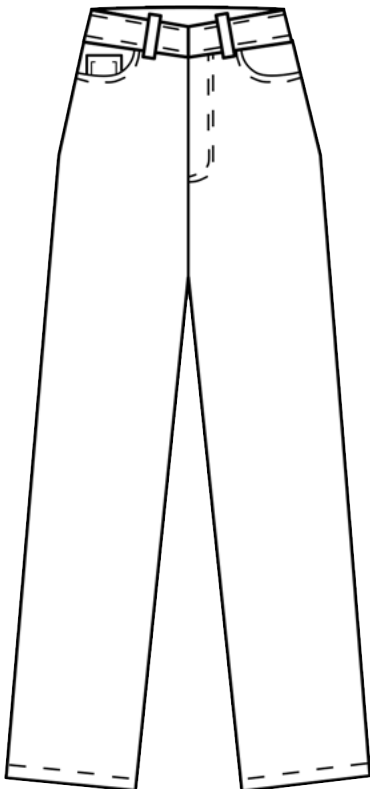
Weight

13oz

Colours (1)

Stonewash

Washing Instructions





11169

Men's Relaxed Slim Fit Denim Jean

SABS
ISO 9001



- Regular rise
- Tapered from the knee
- Men's five pocket denim jean
- Zip fly
- Beltloops

Fabric

100% Cotton Denim

Sizes

72 - 172

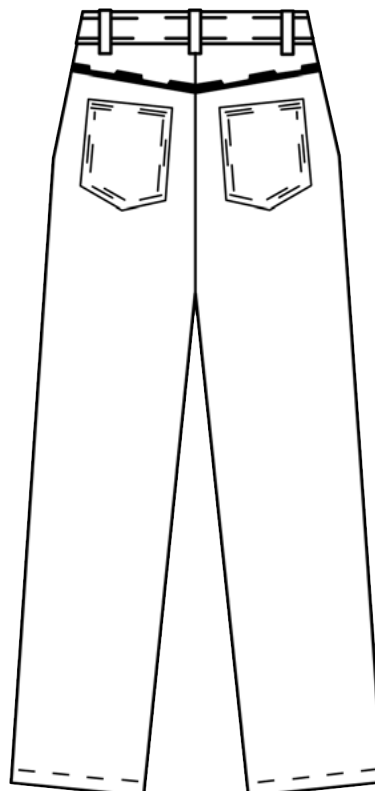
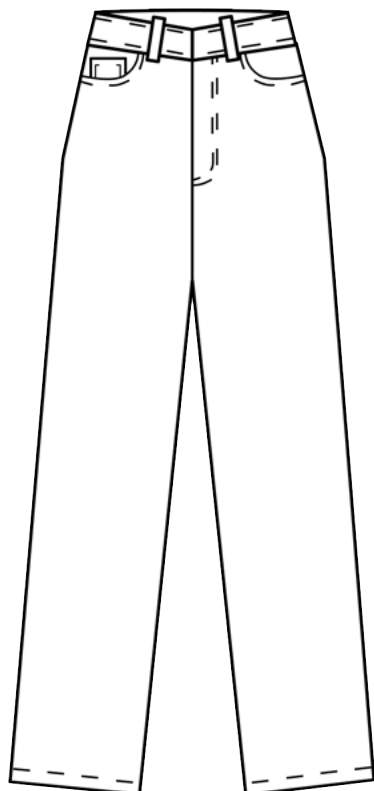
Weight

13oz

Colours (2)

Dark Wash and Stonewash

Washing Instructions



51700

Ladies' Long Sleeve Denim Shirt

SABS
ISO 9001



- Long sleeve denim shirt with shirt collar
- Functional button and tab rollup sleeve
- Two button down flap pockets with box pleats
- Curved hem

Fabric

100% Cotton Denim

Sizes

S - 3XL

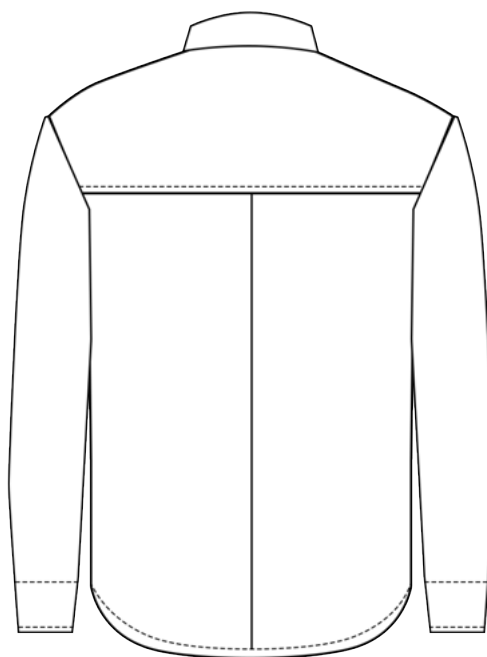
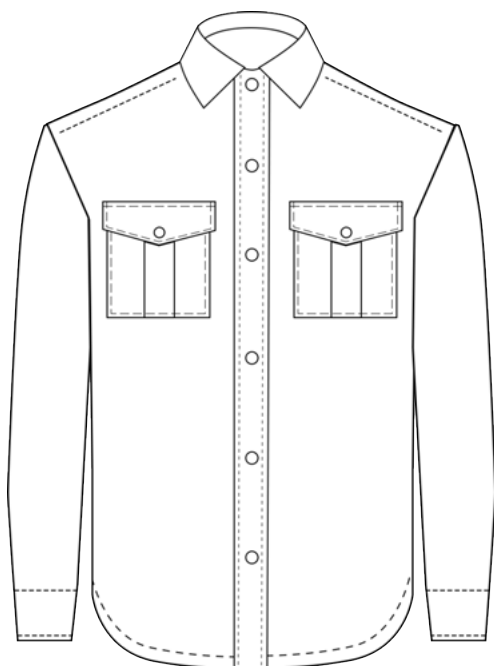
Weight

7oz

Colours (2)

Dark Wash and Medium Wash

Washing Instructions



50208

Men's Short Sleeve Shirt with Glad Neck

SABS
ISO 9001

SANS 1387



- Short sleeve cotton shirt with glad neck
- Button down placket
- 2 breast pockets with button down flaps

Fabric

J54 - 100% Cotton

Sizes

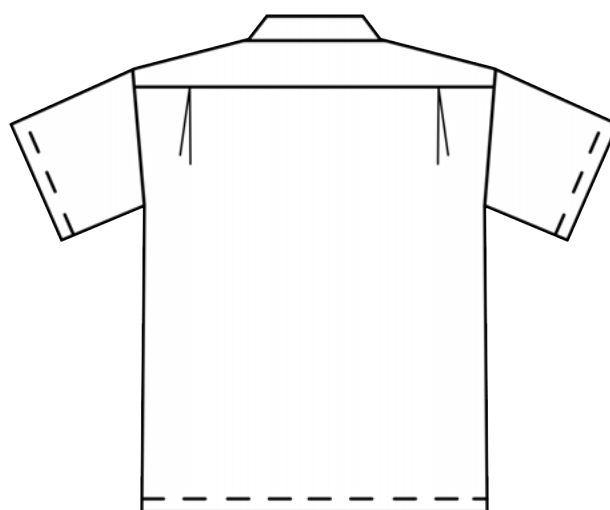
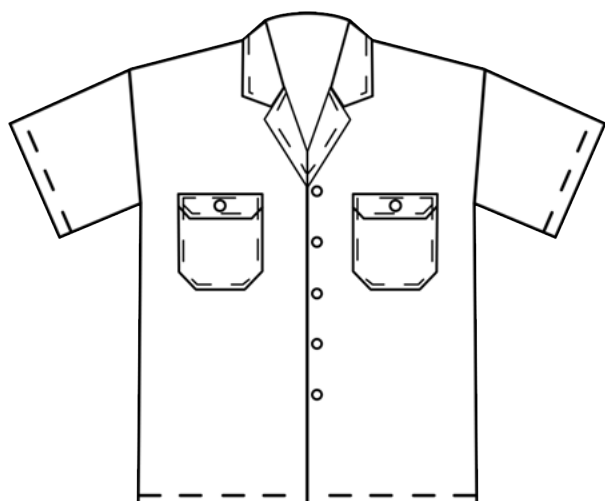
S - 3XL

Weight

220gsm

Colours (13)

Royal Blue, Red, Yellow, Green, Grey, Navy, Black, White, Unbleached, Brown, Orange, Khaki, Emerald

Washing Instructions
HOT
WASHDO NOT
BLEACHWARM IRON
WHEN DAMPP
DRY
CLEANABLEDO NOT
TUMBLE DRY





11671

Ladies' Straight Leg Jean

SABS
ISO 9001



- Ladies' five pocket denim jean
- Zip fly
- Beltloops

Fabric

78% Cotton
21% Polyester 1% Spandex

Sizes

28 - 42

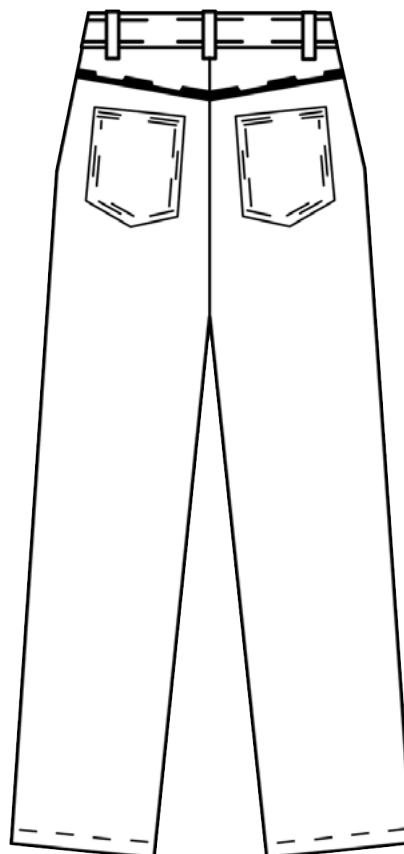
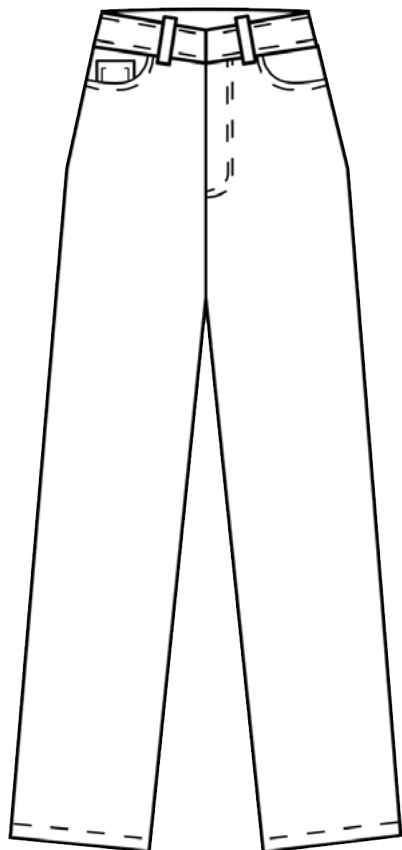
Weight

10oz

Colours (2)

Dark Wash and Medium Wash

Washing Instructions





11672

Ladies' Denim Capri

SABS
ISO 9001



- Ladies' five pocket denim capri
- Zip fly
- Beltloops

Fabric

78% Cotton
21% Polyester 1% Spandex

Sizes

28 - 42

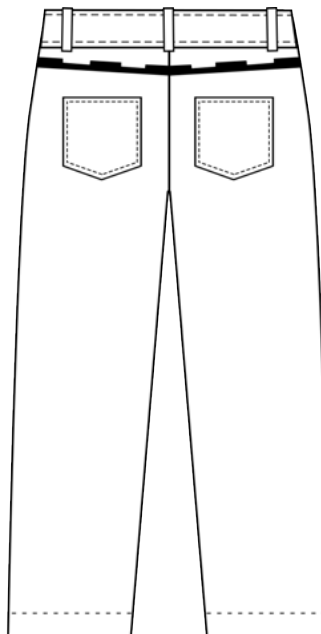
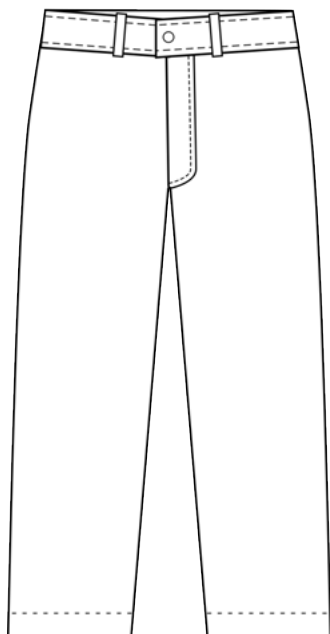
Weight

10oz

Colours (2)

Dark Wash and Medium Wash

Washing Instructions







100% COTTON

Our garments will keep you cool in summer and warm in winter
- perfect for those outdoor work environments - while denim offers
high-abrasion resistance for those medium-duty jobs.

**Bring the best of work and leisure together
with Sweet-Orr utility workwear...**



15200

Men's Flat Front Chino

SABS
ISO 9001

SANS 1387



- Flat front chino with side entry pocket
- 1 double welt pocket and a single flap pocket on back
- Zip Fly
- Beltloops

Fabric

100% Cotton Twill

Sizes

72 - 172

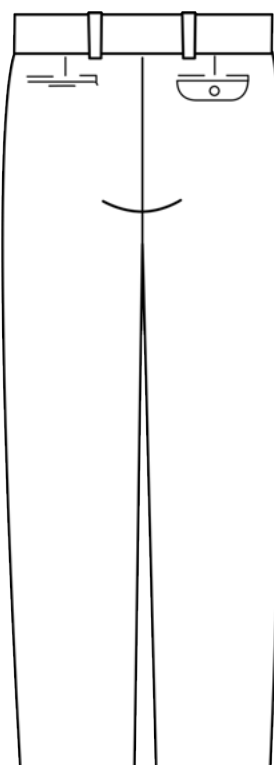
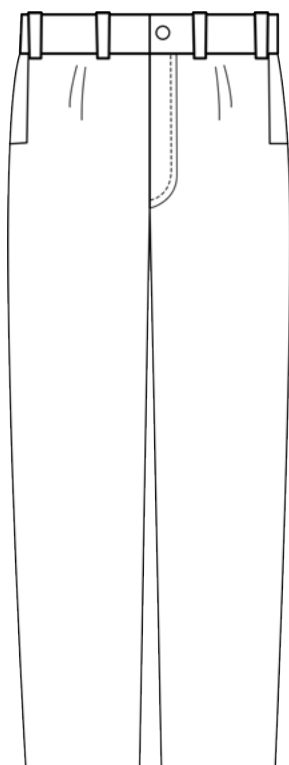
Weight

240gsm

Colours (4)

Black, Navy, Stone, Fatigue Green

Washing Instructions





15201

Men's Double Pleat Chino

SABS
ISO 9001

SANS 1387



- Double pleat chino with slanted pockets
- 1 double welt pocket and a single flap pocket on back
- Zip fly
- Beltloops

Fabric

100% Cotton Twill

Sizes

72 - 172

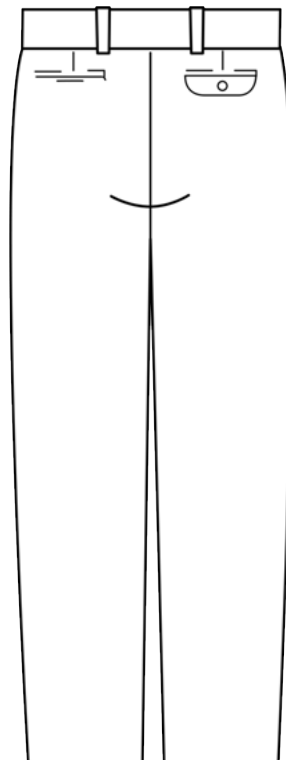
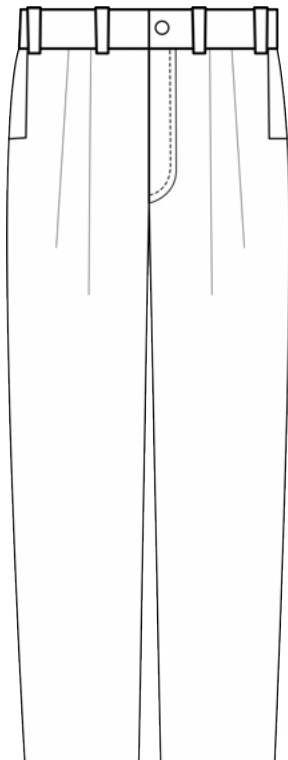
Weight

240gsm

Colours (4)

Black, Navy, Stone, Fatigue Green

Washing Instructions



71600

Men's Two Toned Cargo Short



SABS
ISO 9001

SANS 1387



- Flat front cargo short with slanted pockets
- Welted pocket with flap pocket on back
- Two toned bellow pocket on the left leg
- Zip Fly
- Beltloops

Fabric

100% Cotton Twill

Sizes

72 - 172

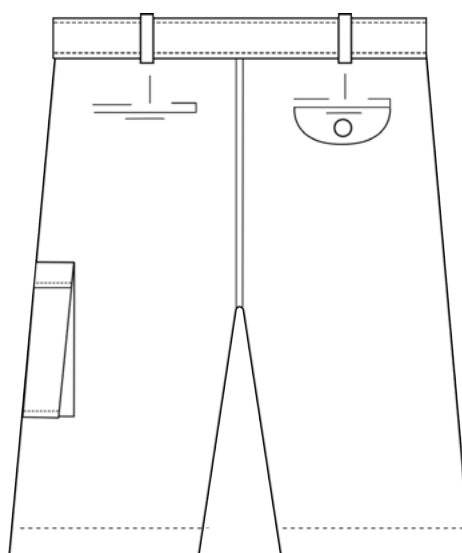
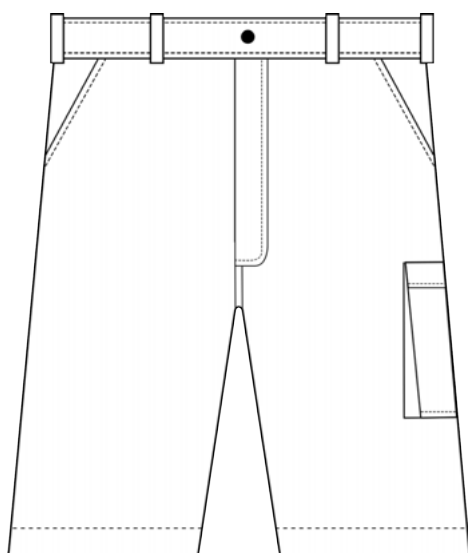
Weight

240gsm

Colours (4)

Black, Navy, Stone, Fatigue Green

Washing Instructions





15202

Men's Two Toned Cargo Pant

SABS
ISO 9001

SANS 1387



- Flat front cargo pant with slanted pockets
- Weltd pocket with flap pocket on back
- Two toned bellow pocket on the left leg
- Zip fly
- Beltloops

Fabric

100% Cotton Twill

Sizes

72 - 172

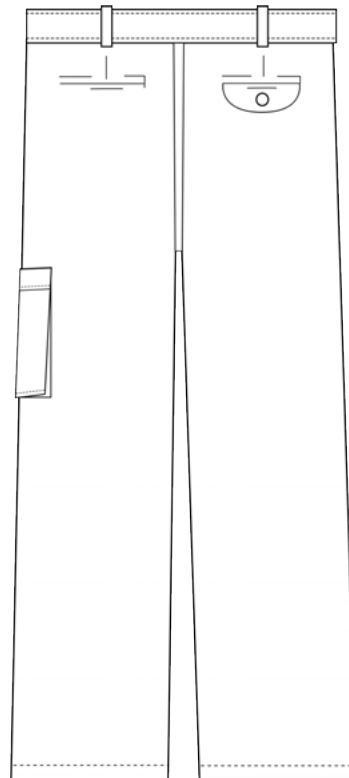
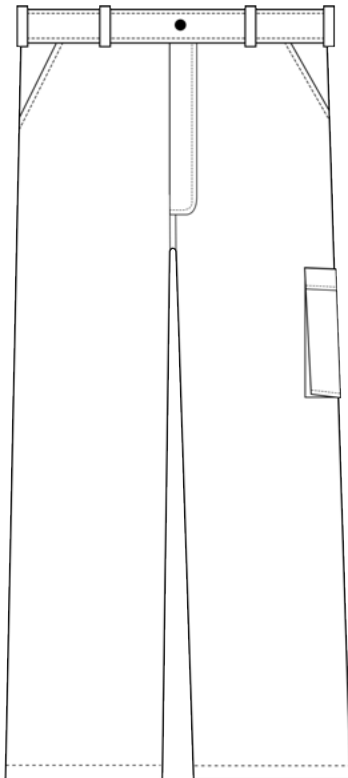
Weight

240gsm

Colours (4)

Black, Navy, Stone, Fatigue Green

Washing Instructions



50209

Men's Long Sleeve Cotton Poplin Shirt with Curved Hem

SABS
ISO 9001


- Long sleeve cotton poplin shirt with glad neck collar
- Cuffs with pigmented button closure
- 2 breast pockets with button down flaps

Fabric

100% Cotton Poplin

Sizes

S - 3XL

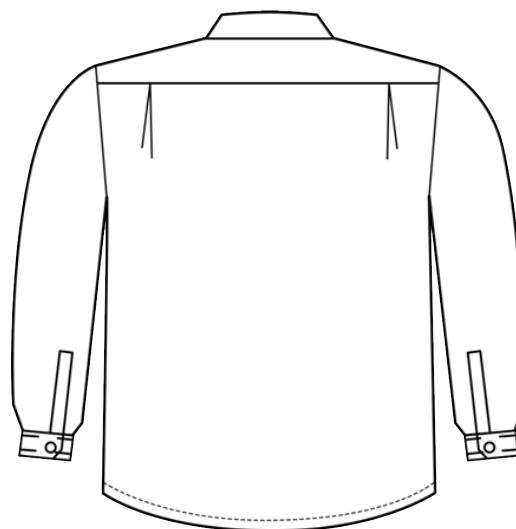
Weight

115gsm

Colours (1)

Stone

Washing Instructions





50209

Men's Long Sleeve Cotton Poplin Shirt with Straight Hem

SABS
ISO 9001



- Long sleeve cotton poplin shirt with glad neck
- Cuffs with pigmented button closure
- 2 breast pockets with button down flaps

Fabric

100% Cotton Poplin

Sizes

S - 3XL

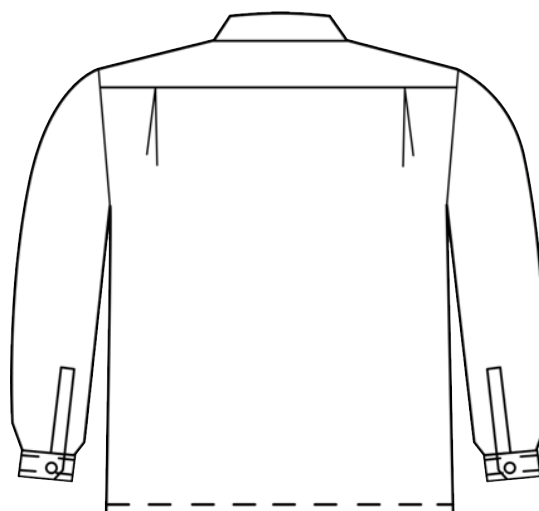
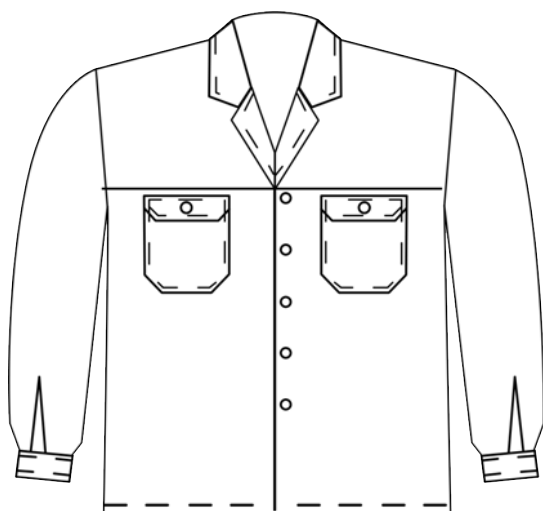
Weight

115gsm

Colours (1)

Stone

Washing Instructions



50208

Men's Short Sleeve Cotton Poplin Shirt with Straight Hem

SABS
ISO 9001



- Short sleeve cotton poplin shirt with glad neck
- 2 breast pockets with button down flaps

Fabric

100% Cotton Poplin

Sizes

S - 3XL

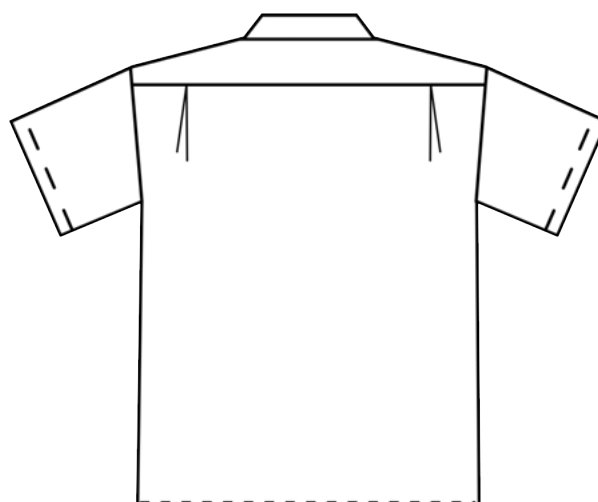
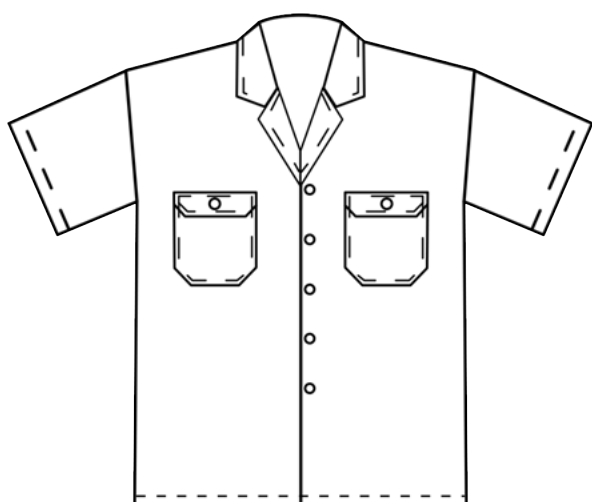
Weight

115gsm

Colours (1)

Stone

Washing Instructions





50209

Men's Long Sleeve Shirt with Straight Hem and Glad Neck

SABS
ISO 9001

SANS 1387



- Long sleeve cotton shirt with glad neck
- Cuffs with pigmented button closure
- 2 breast pockets with button down flaps

Fabric

D59 - 100% Cotton

Sizes

S - 3XL

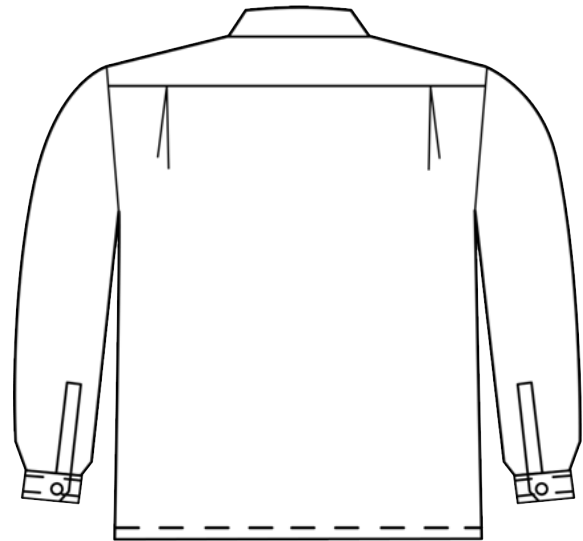
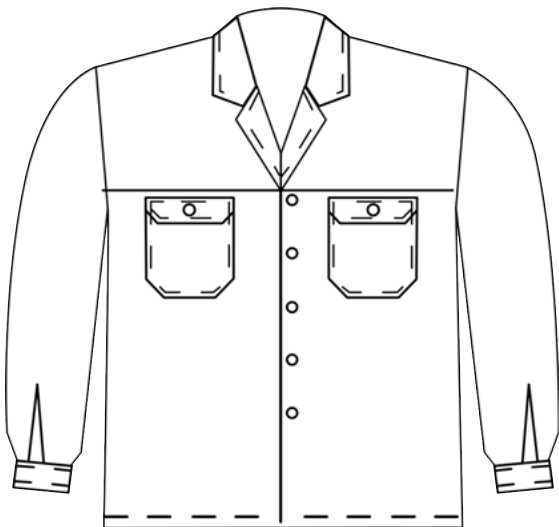
Weight

270gsm

Colours (4)

Orange, Navy, Royal, Khaki

Washing Instructions



50209

Men's Long Sleeve Shirt with Glad Neck



SABS
ISO 9001

SANS 1387



- Long sleeve cotton shirt with glad neck
- Cuffs with pigmented button closure
- 2 breast pockets with button down flaps

Fabric

J54 - 100% Cotton

Sizes

S - 3XL

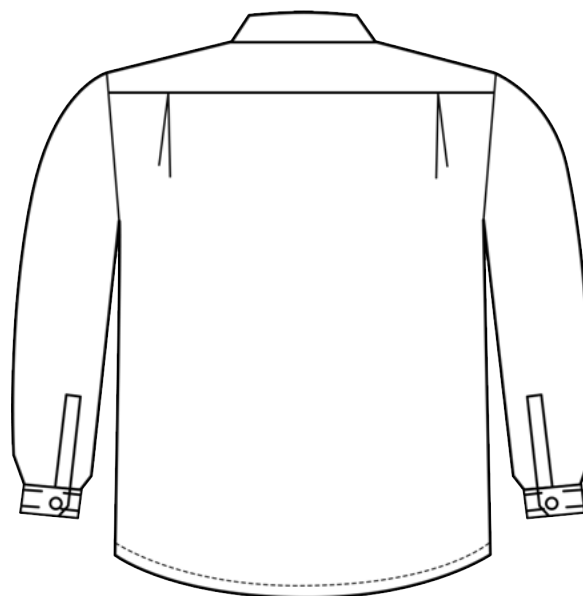
Weight

220gsm

Colours (13)

Royal Blue, Red, Yellow, Green, Grey, Navy, Black, White, Unbleached, Brown, Orange, Khaki, Emerald

Washing Instructions



51701

Ladies' Long Sleeve Poplin Shirt

SABS
ISO 9001



- Long sleeve cotton poplin with shirt
- Functional button and tab rollup sleeve
- 2 breast pockets with box pleats
- Metal button down flaps
- Curved hem

Fabric

100% Cotton

Sizes

S - 3XL

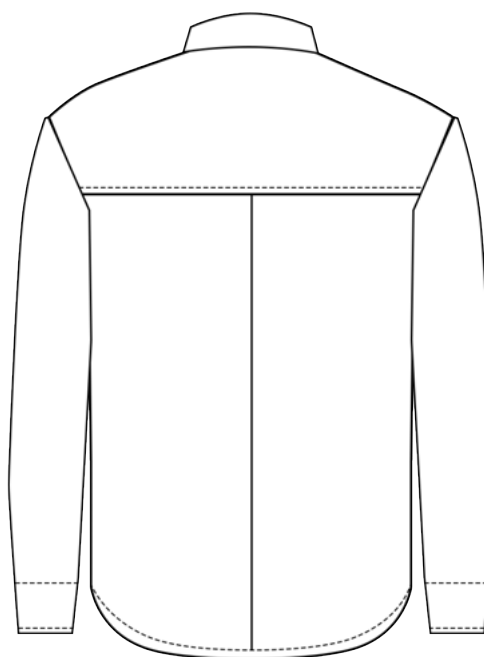
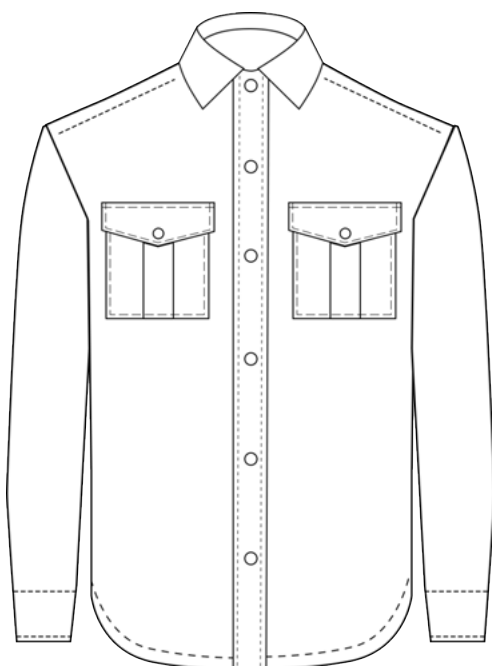
Weight

180gsm

Colours (2)

Navy, Black

Washing Instructions





DEPENDABLE AND ON CALL.

Service occupations carry responsibility; inappropriate workwear may prove a dangerous distraction, to you and those nearby.

Our range of coats and scrubs serve a dual function in that they protect the wearer from pathogens that can play host even after laundering, whilst preventing contamination of patients. Made from 100% cotton, the apparel can be washed at high temperatures, providing a contamination and contagion-free work environment.

Project pride, professionalism and confidence in the workplace knowing that you can perform tasks easily, comfortably and safely in **Sweet-Orr medical workwear.**



27108

Scrubs

SABS
ISO 9001



- Short sleeve V neck shirt
- Drawstring pant
- Single breast pocket

Fabric

100% Cotton

Sizes

67 - 127 / 72 - 172

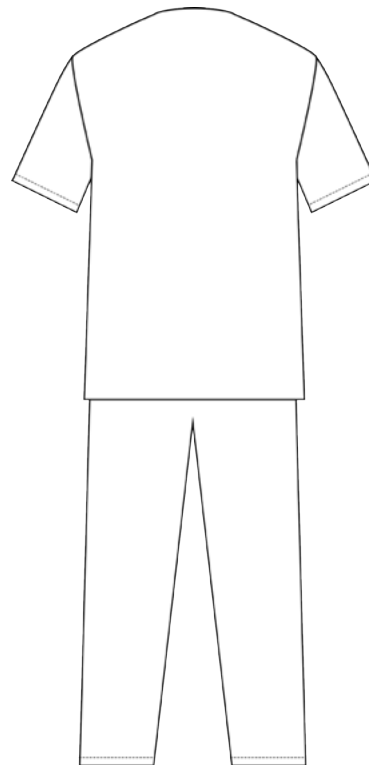
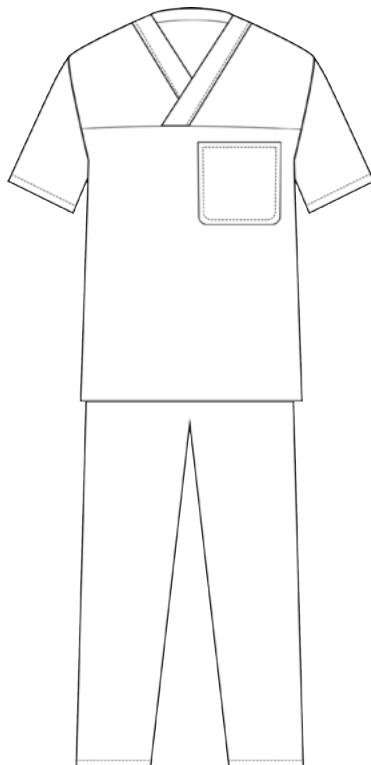
Weight

185gsm

Colours (1)

Blue

Washing Instructions





30800

Lab Coat

SABS
ISO 9001

SANS 1387



- Dustcoat with button closure
- Single breast pocket & 2 front patch pockets
- Centre back vent

Fabric

J54 - 100% Cotton

Sizes

67 - 127 / 72 - 172

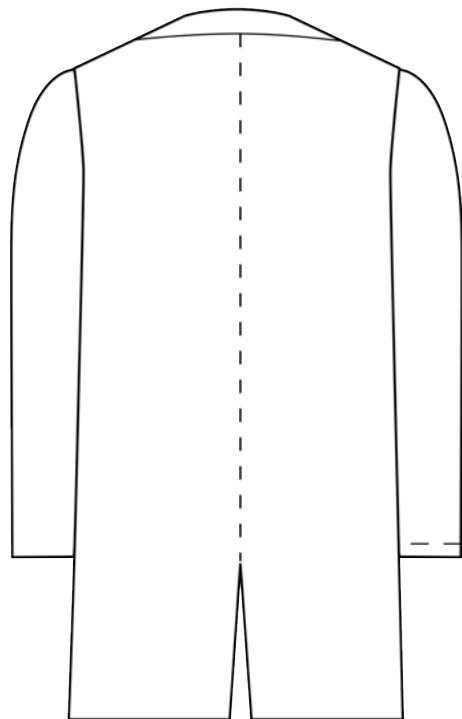
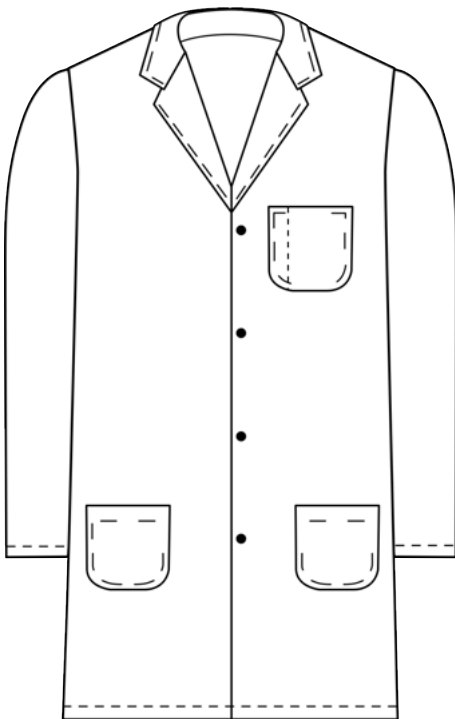
Weight

220gsm

Colours (13)

Royal Blue, Red, Yellow, Green, Grey, Navy, Black, White, Unbleached, Brown, Orange, Khaki, Emerald

Washing Instructions







COLD COMFORT.

Don't get caught out in the cold. Stay warm and feel comfortable in **Sweet-Orr's** winter protective wear.

Our garments are lined with quilted padding to retain heat and to keep you warm.

With Sweet-Orr's winter workwear, a drop in temperature doesn't mean a drop in productivity.

06604

Men's Padded Bunny Jacket

SABS
ISO 9001

SANS 1387



- Long sleeve bunny jacket with elasticated cuffs
- 1/2 elastic on hem
- Quilted inner lining
- 2 single welt front pockets
- Centre front zip

Fabric

J54 - 100% Cotton

Sizes

S - 3XL

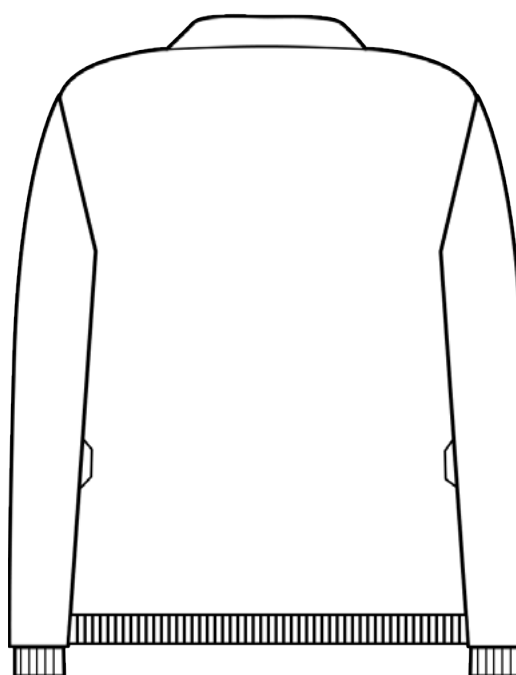
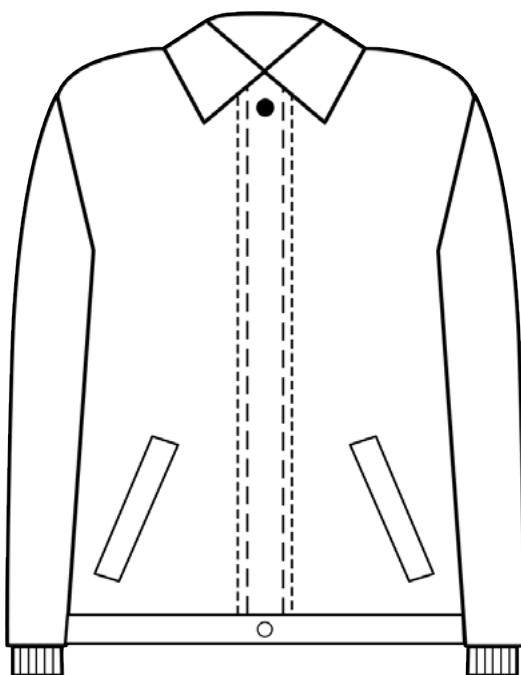
Weight

220gsm

Colours (1)

Navy

Washing Instructions





06605

Men's Padded Zip Through Jacket with Plain Contrast Lining

SABS
ISO 9001

SANS 1387



- Long sleeve jacket with elasticated cuffs
- 1/2 elastic on waist
- Quilted inner lining
- 2 single welt front pockets
- Centre front zip

Fabric

J54 - 100% Cotton

Sizes

S - 3XL

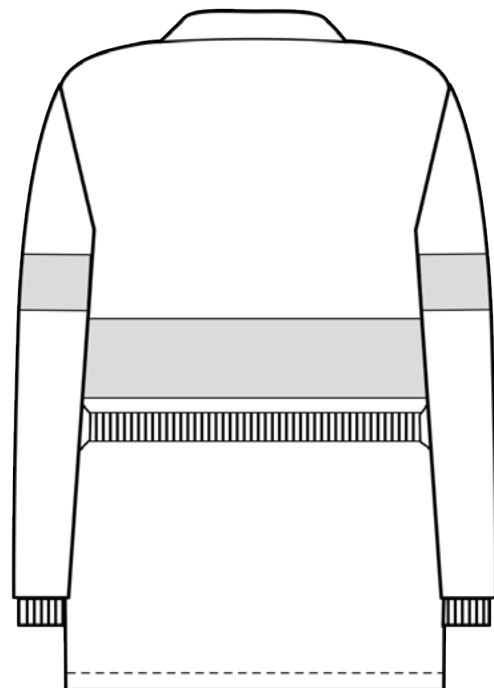
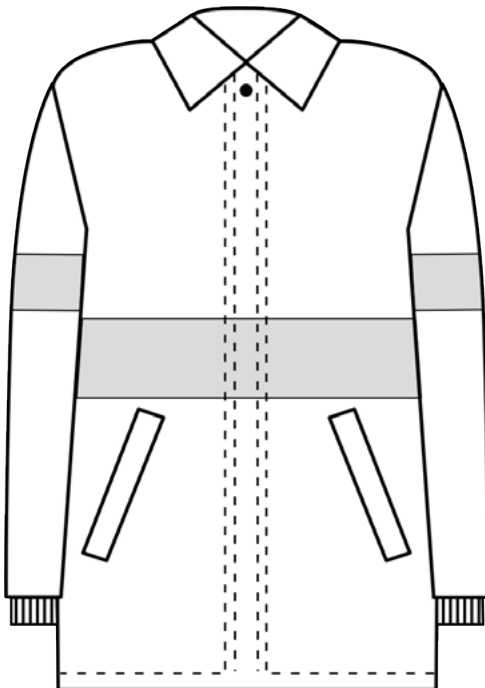
Weight

220gsm

Colours (1)

Navy

Washing Instructions



06606

Men's Padded Zip Through Jacket with Quilted Lining

SABS
ISO 9001



- Long sleeve padded jacket with elasticated cuffs
- 1/2 elastic waistband
- Quilted inner lining
- 2 single welt front pockets
- Centre front zip

Fabric

Acid Repellant
80% Polyester / 20% Viscose

Sizes

S - 3XL

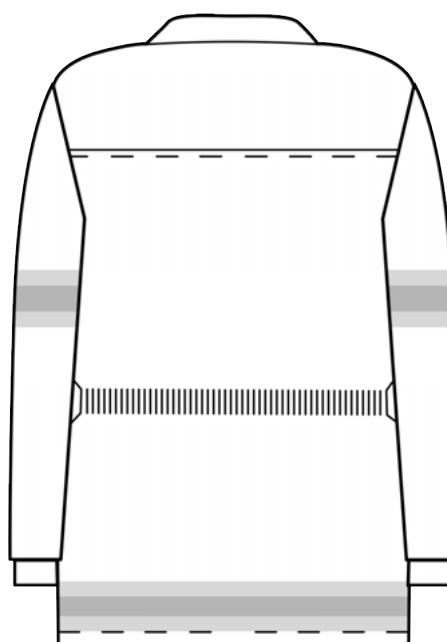
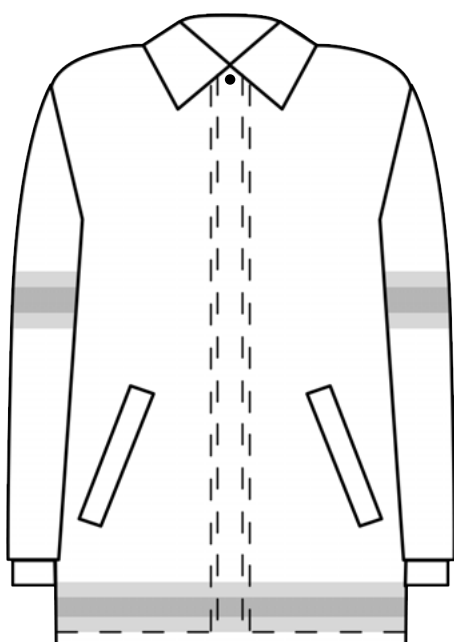
Weight

265gsm

Colours (2)

Navy and Bottle Green

Washing Instructions





06486

Men's Hooded Padded Zip Through Jacket with High Visibility Detail

SABS
ISO 9001

SANS 1387



- Detachable zip off hooded jacket with drawcord at hood
- Elasticated cuffed sleeve
- 1/2 elasticated detail on the back
- Concealed zip detail
- 2 single welt pockets
- Centre front zip

Fabric

D59 - 100% Cotton

Sizes

S - 3XL

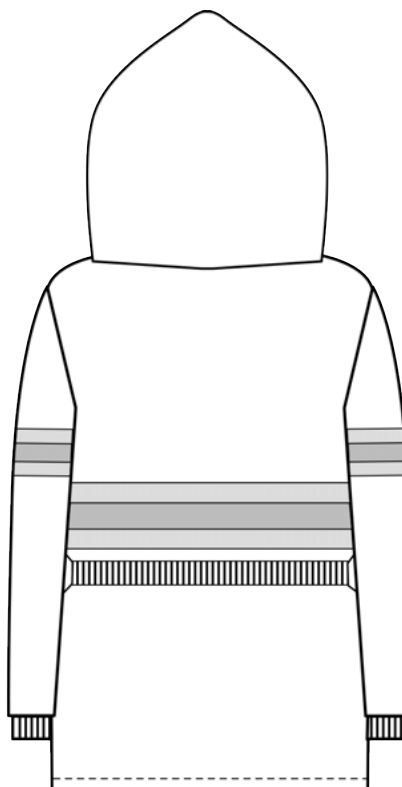
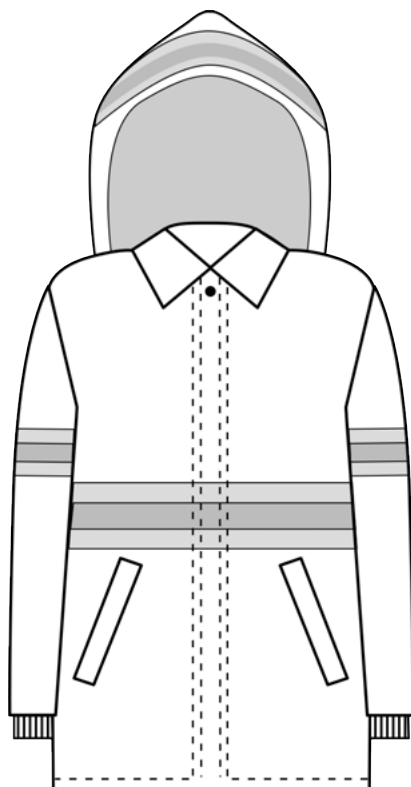
Weight

270gsm

Colours (1)

Navy

Washing Instructions







L & Z AUTO CENTER
MAIL 100-121 510 6066



06607

Men's Denim Padded Jacket with Quilted Lining

SABS
ISO 9001



- Long sleeve padded jacket with elasticated cuffs
- 1/2 elastic waistband
- Quilted inner lining
- 2 single welt front pockets
- Centre front zip

Fabric

100% Cotton Denim

Sizes

S - 3XL

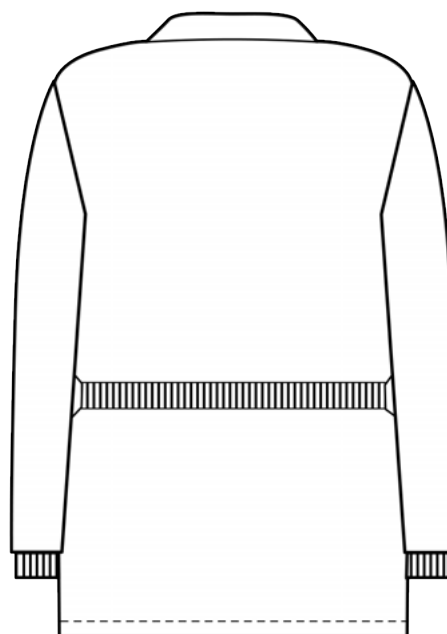
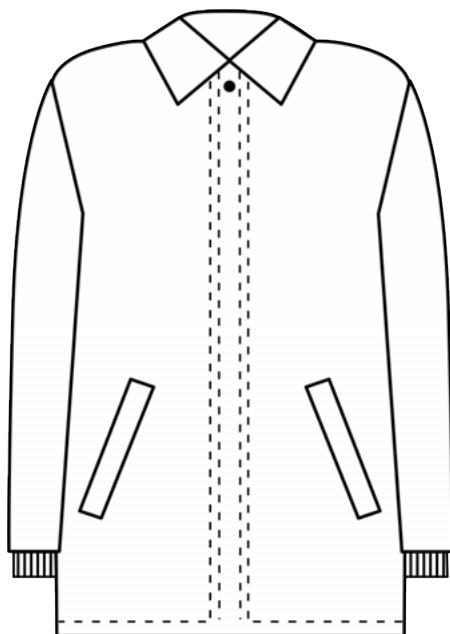
Weight

7oz

Colours (1)

Dark wash Denim

Washing Instructions



06499

Men's Flame Retardant Padded Zip Through Jacket with High Vis Detail

SABS
ISO 9001

SANS 1387



- Long sleeve padded jacket with elasticated cuffs
- 1/2 elastic waistband
- Quilted inner lining
- 2 single welt front pockets
- Single breast flap pocket with press stud closure
- Centre front zip

Fabric

D59 - 100% Cotton flame retardant

Sizes

S - 3XL

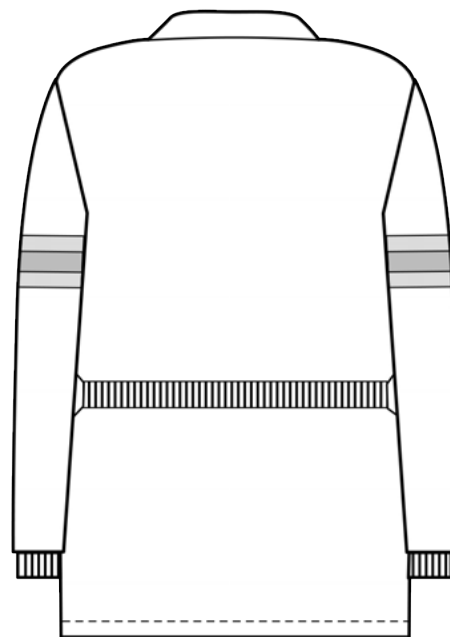
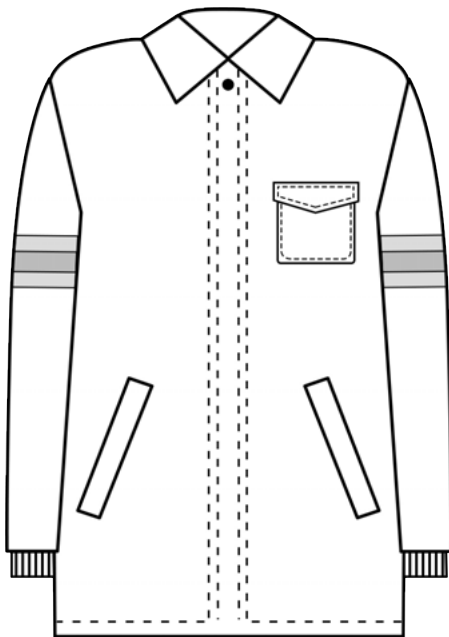
Weight

315gsm

Colours (6)

Fern Green, Orange, Navy, Royal, Grey, Red

Washing Instructions





The background of the advertisement is a dark, industrial scene. It features a large, cylindrical metal tank or container, possibly for hazardous materials, with a red prohibition sign (a circle with a diagonal line) on its side. Several thick, black, flexible hoses are connected to the tank and run across the floor. The lighting is dramatic, with strong highlights and deep shadows, creating a sense of a hazardous work environment.

RISKY BUSINESS. RELIABLE WORKWEAR.

In the line of duty when dealing with volatile, flammable, dangerous, and unhygienic materials and fluids the occasional spill or burn is a harsh (and hindering) reality.

You need functional and hardwearing protective wear that will rise to the occasion, so you can maintain focus every step of the way.

Sweet-Orr acid repellent, flame retardant and flame acid protective wear minimises risks in potentially hazardous work environments where low visibility, heat and contaminants persist.

SABS
ISO 9001



SUIT: 07141 / TOP: 07846 / TROUSERS: 07302

Men's Continental Suit in Flame Acid

SABS
ISO 9001

SANS 1387



- Easy fitting long sleeve jacket with centre front zip
- Breast pocket with flap and stud closure
- 2 patch pockets
- Trousers with 2 side pockets
- Hip and rule pockets
- Zip fly

Fabric

D59 - 100% Cotton
Flame Acid Repellant

Sizes

72 - 172

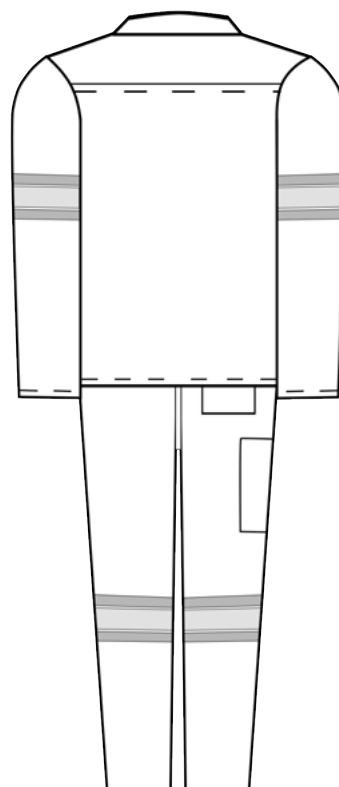
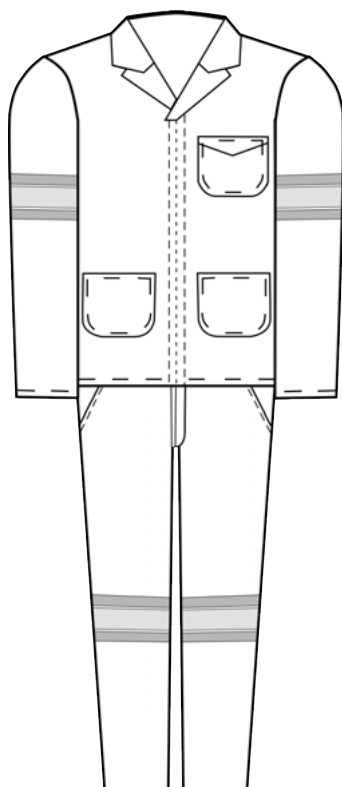
Weight

315gsm

Colours (1)

Navy

Washing Instructions





SUIT: 06190 / TOP: 06489 / TROUSERS: 06365

Ladies' Continental Suit in Flame Acid

SABS
ISO 9001

SANS 1387



- Long sleeve zip through jacket with front yoke
- Bust darts with skirt pockets
- Back darts and no side vents
- Trousers have half elasticated waistband with zip fly and side entry pockets
- Side seams with triple needle stitch

Fabric

D59 - 100% Cotton
Flame Acid Repellant

Sizes

67 - 127

Weight

315gsm

Colours (1)

Navy

Washing Instructions



HOT
WASH



DO NOT
BLEACH



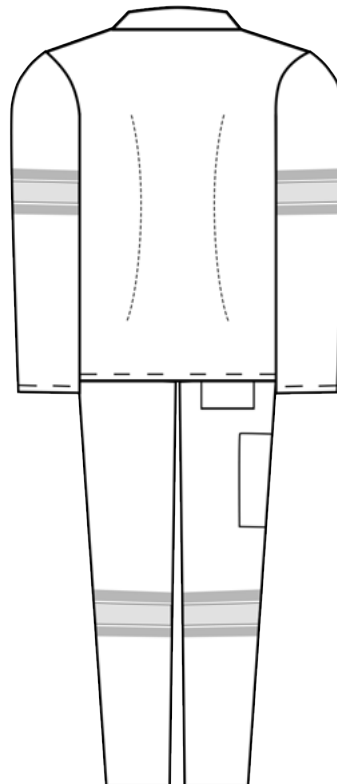
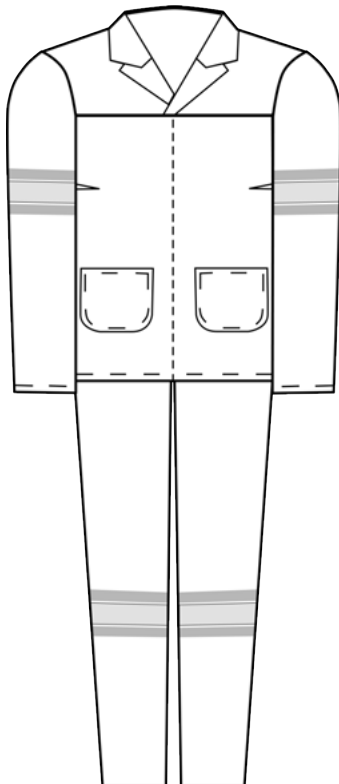
HOT
IRON



DRY
CLEANABLE



DO NOT
TUMBLE DRY





SUIT: 06120 / TOP: 06401 / TROUSERS: 06305

Men's Long Sleeve Continental Suit Flame Retardant

SABS
ISO 9001

SABS
APPROVED
1928/2750

SANS 1387

EN 531
EN 532
EN 533



- Easy fitting long sleeve jacket with centre front zip
- Single breast pocket with flap and stud closure
- 2 patch pockets
- Trousers with 2 side pockets
- Hip and rule pockets
- Zip fly

Fabric

D59 - 100% Cotton

Flame Retardant

Sizes

72 - 172

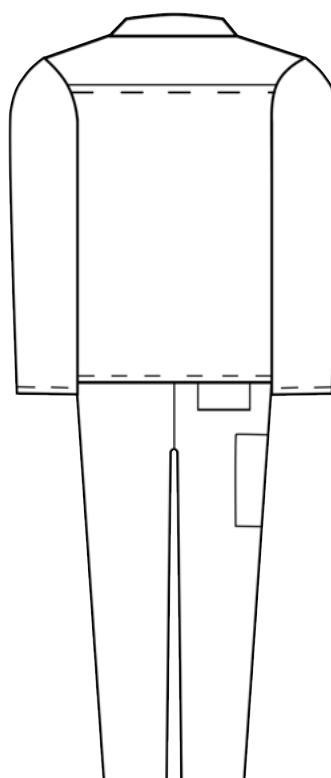
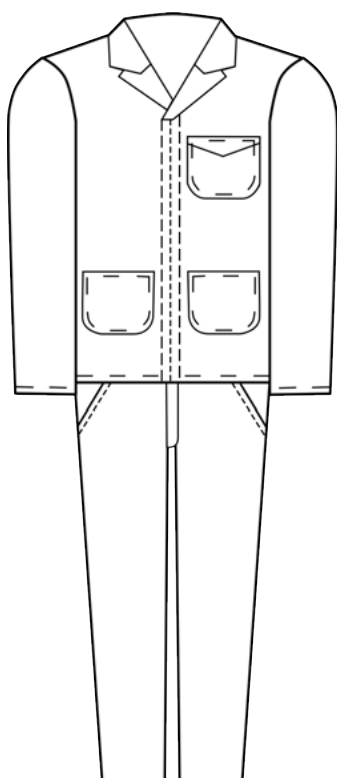
Weight

315gsm

Colours (6)

Fern Green, Orange, Navy, Royal, Grey, Red

Washing Instructions





02200

Utility Work Suit Acid Repellant

SABS
ISO 9001



- Long sleeve with hemmed cuffs
- Single breast pocket with pencil division
- Side seam vents
- Hip pocket
- Button fly
- Elasticated waist band on back

Fabric

Acid Repellant
80% Polyester / 20% Viscose

Sizes

72 - 172

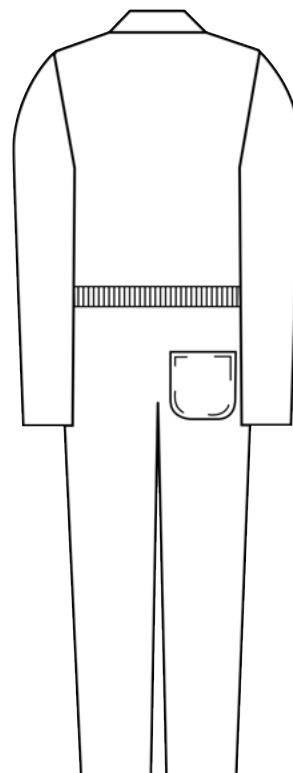
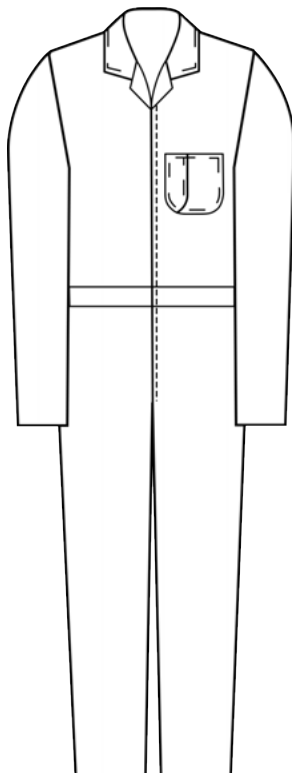
Weight

265gsm

Colours (3)

Bottle Green, Navy, White

Washing Instructions





02100

Artisan Suit Flame Retardant

SABS
ISO 9001

SANS 1387



- Long sleeve with hemmed cuffs
- Two breast pockets with flaps and stud closure
- Two side entry pockets with vents
- Hip and rule pockets
- Button fly

Fabric

D59 - 100% Cotton flame retardant

Sizes

72 - 172

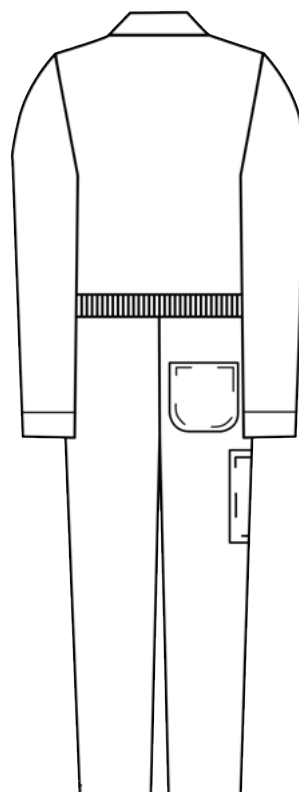
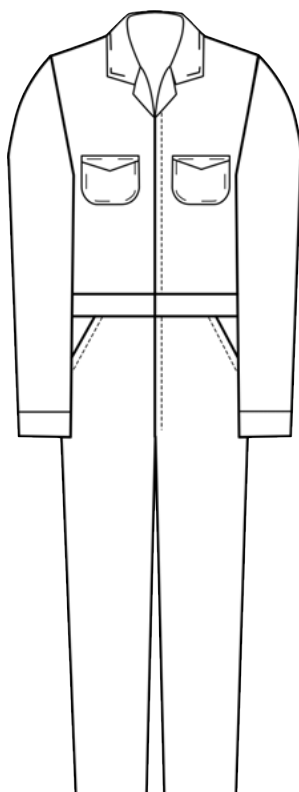
Weight

315gsm

Colours (6)

Fern Green, Orange, Navy, Royal, Grey, Red

Washing Instructions





02102

Engineer's Suit Flame Retardant

SABS
ISO 9001

SANS 1387



- Long sleeve with elasticated cuffs
- Two breast pockets with flaps and stud closure
- Two side entry pockets with vents
- Hip and rule pockets
- Double slider zip fly
- Elasticated waistband on back

Fabric

D59 - 100% Cotton flame retardant

Sizes

72 - 172

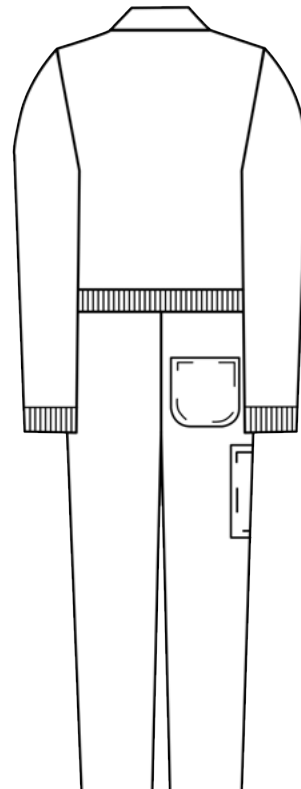
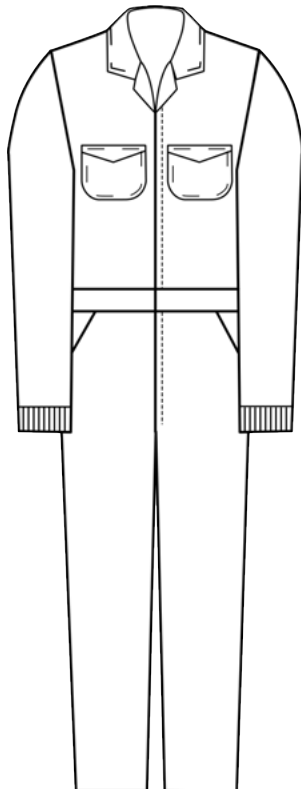
Weight

315gsm

Colours (6)

Fern Green, Orange, Navy, Royal, Grey, Red

Washing Instructions





SUIT: 06190 / TOP: 06489 / TROUSERS: 06365

Ladies' Long Sleeve Continental Suit Flame Retardant

SABS
ISO 9001

SANS 1387



- Long sleeve zip through jacket with front yoke
- Bust darts with skirt pockets
- Back darts
- Trousers have half elasticated waistband with zip fly and side entry pockets
- Side seams with triple needle stitch

Fabric

D59 - 100% Cotton flame retardant

Sizes

67 - 127

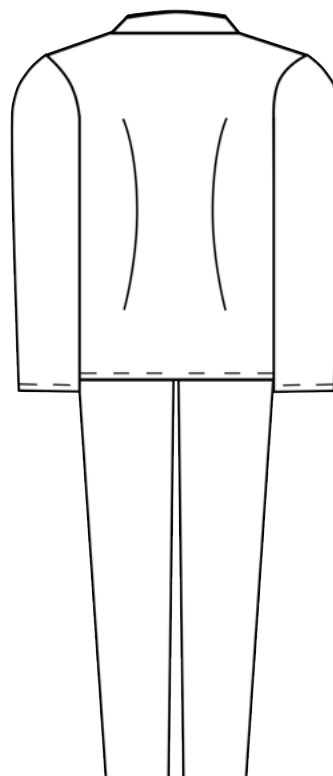
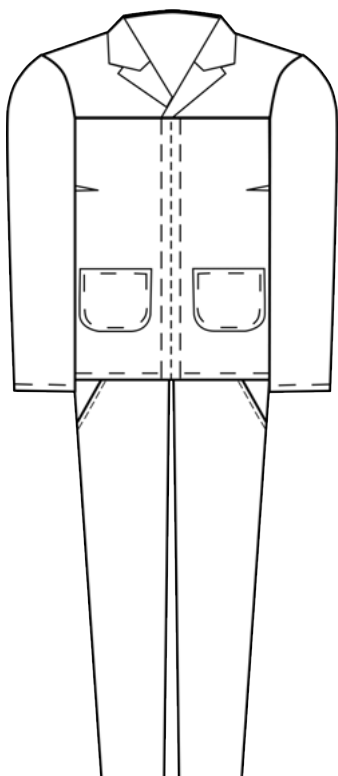
Weight

315gsm

Colours (6)

Fern Green, Orange, Navy, Royal, Grey, Red

Washing Instructions







SUIT: 06141 / TOP: 06419 / TROUSERS: 06339

Men's Two Piece Suit with High Vis Detail

SABS
ISO 9001

DuPont™
Nomex®



- Easy fitting long sleeve jacket with centre front zip
- Breast pockets with flap and stud closure
- 2 patch pockets
- Trousers with 2 side pockets
- Hip pocket
- Zip fly

Fabric

100% Nomex® Comfort

(93% Nomex / 5% Kevlar / 2% anti-static)

Sizes

72 - 172

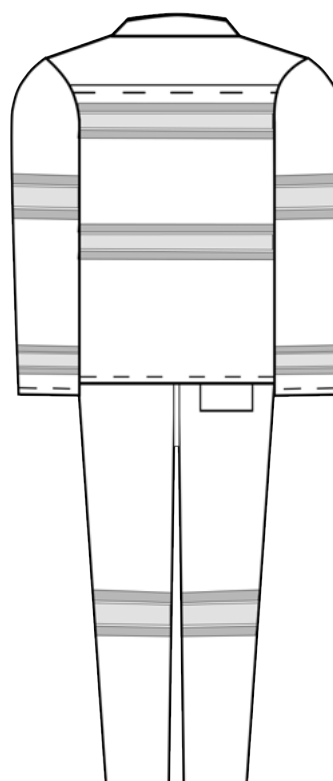
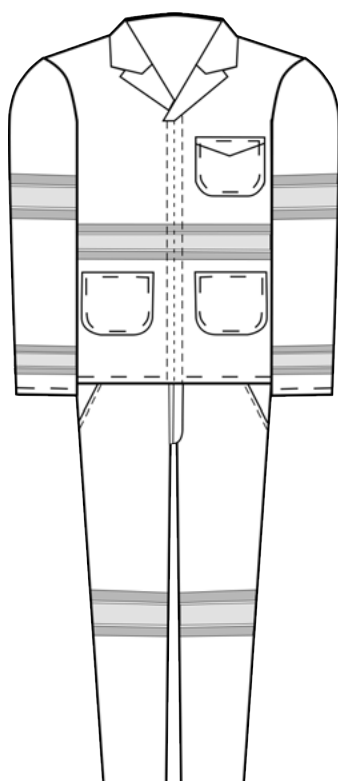
Weight

200gsm

Colours (1)

Navy

Washing Instructions





SUIT: 06190 / TOP: 06489 / TROUSERS: 06365

Ladies' Long Sleeve Continental Suit Acid Repellant

SABS
ISO 9001



- Long sleeve zip through jacket with front yoke
- Bust darts with skirt pockets
- Back darts
- Trousers have half elasticated waistband with zip fly and side entry pockets
- Side seams with triple needle stitch

Fabric

Acid Repellant
80% Polyester / 20% Viscose

Sizes

67 - 127

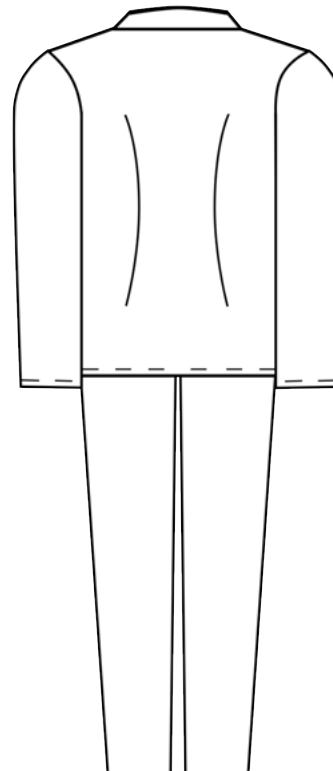
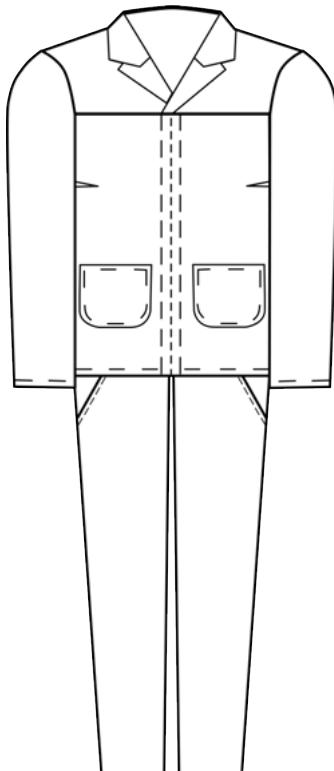
Weight

265gsm

Colours (3)

Bottle Green, Navy, White

Washing Instructions







SUIT: 06120 / TOP: 06401 / TROUSERS: 06305

Men's Long Sleeve Continental Suit Acid Repellant

SABS
ISO 9001



- Easy fitting long sleeve jacket with centre front zip
- Single breast pocket with flap and stud closure
- 2 patch pockets
- Trousers with 2 side pockets
- Hip and rule pockets
- Zip fly

Fabric

Acid Repellant
80% Polyester / 20% Viscose

Sizes

72 - 172

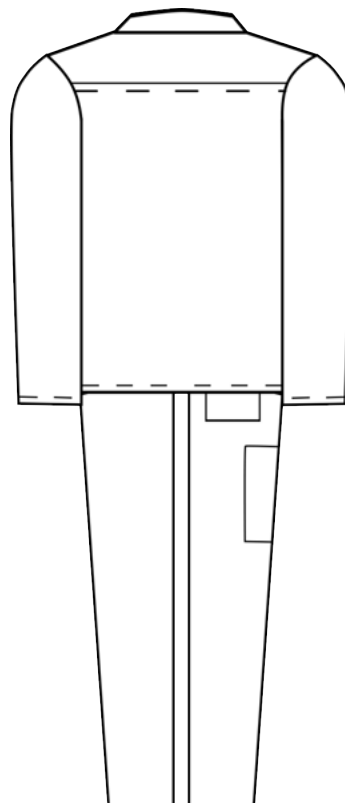
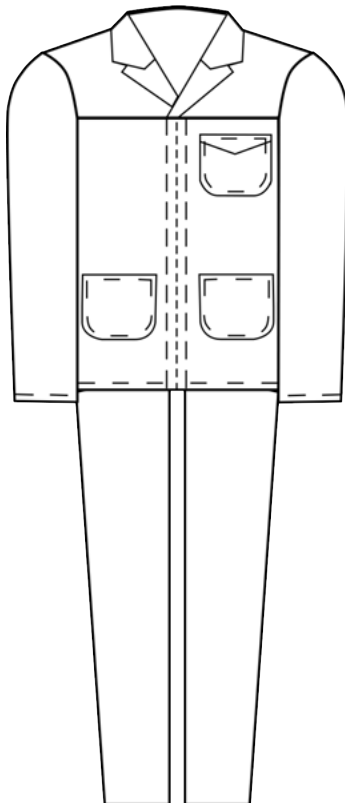
Weight

265gsm

Colours (3)

Bottle Green, Navy, White

Washing Instructions





02100

Artisan Suit Acid Repellant

SABS
ISO 9001



- Long sleeve with hemmed cuffs
- Two breast pockets with flaps and stud closure
- Two side entry pockets with vents
- Hip and rule pockets
- Button fly
- Elasticated waist band on back

Fabric

Acid Repellant
80% Polyester / 20% Viscose

Sizes

72 - 172

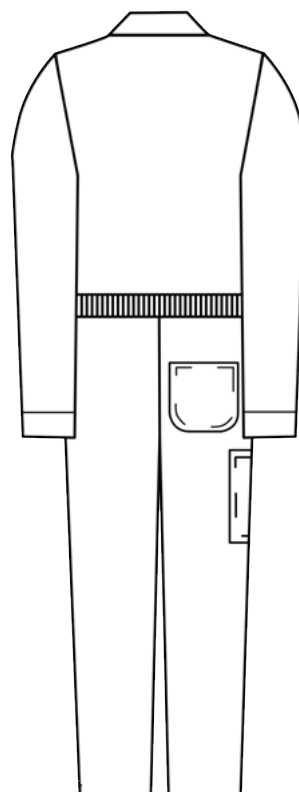
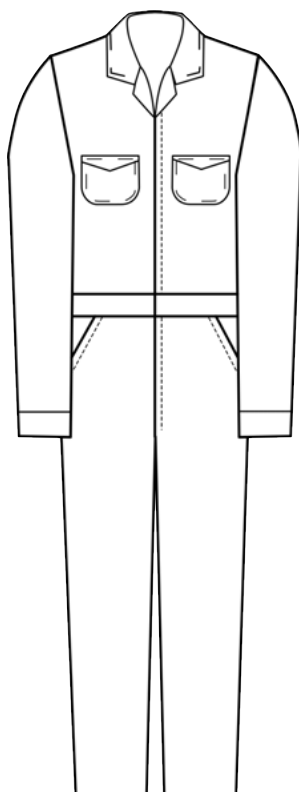
Weight

265gsm

Colours (3)

Bottle Green, Navy, White

Washing Instructions





02102

Engineer's Suit Acid Repellant

SABS
ISO 9001



- Long sleeve with elasticated cuffs
- Two breast pockets with flaps and stud closure
- Two side entry pockets with vents
- Hip and rule pockets
- Double slider zip fly
- Elasticated waist band on back

Fabric

Acid Repellant
80% Polyester / 20% Viscose

Sizes

72 - 172

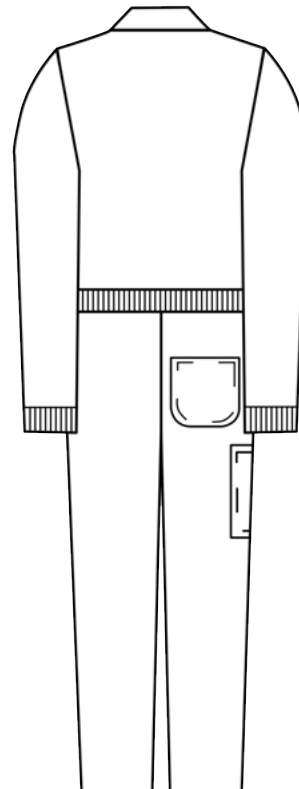
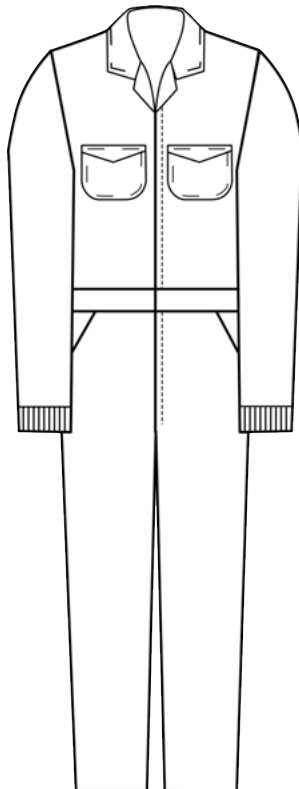
Weight

265gsm

Colours (3)

Bottle Green, Navy, White

Washing Instructions



AT YOUR SERVICE.

In the hospitality industry, brand image is key.

For this reason, front-of-house staff members must consistently mirror the professional image your business strives to project.

Our chef uniforms also meet the highest food safety standards and are durable, practical and comfortable.

We help you maintain specific requirements essential in the industry to ensure preventative methods against the contamination of food. Using the correct workwear made of materials created to effectively handle excess moisture, reduce staining and eliminate cross contamination will minimise bacteria across all spaces.







JACKET: 30704 / TROUSERS: 08303

Ladies' Chefs Two Piece Suit

SABS
ISO 9001

SANS 1387



- Classic double breasted Chef jacket with checkered or plain pant

Fabric

J54 - 100% Cotton

Sizes

S - 3XL

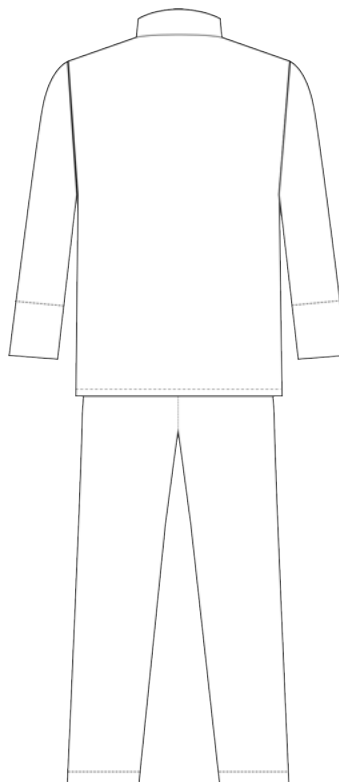
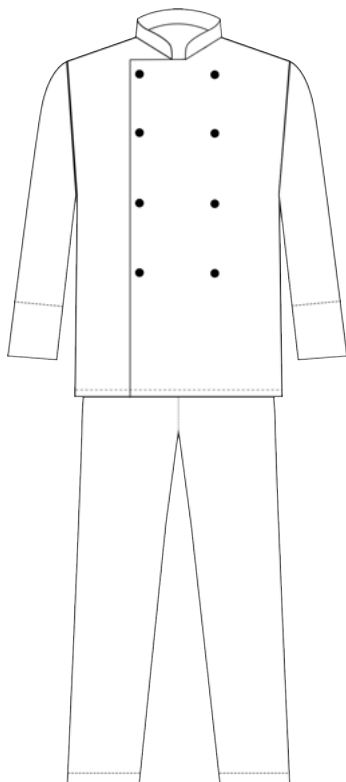
Weight

220gsm

Colours

White jacket, chefs check pant or black pant

Washing Instructions





40201

Ladies' Hospitality Dress

SABS
ISO 9001



- Short sleeve, knee length wrap dress with front side button closure

Fabric

100% Cotton

Sizes

S - 3XL

Weight

185gsm

Colours (1)

Navy with yellow contrast piping

Washing Instructions



HOT
WASH



DO NOT
BLEACH



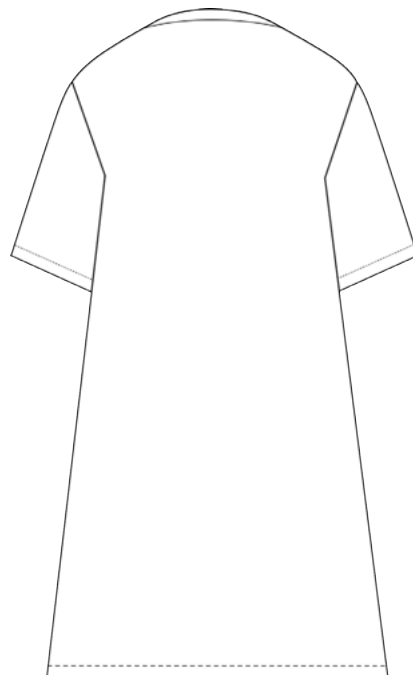
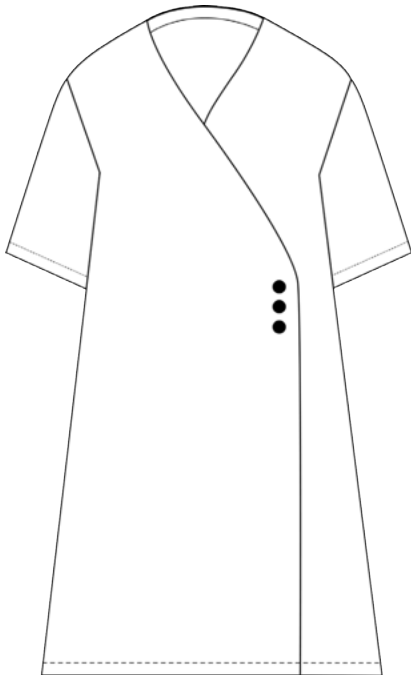
WARM IRON
WHEN DAMP



DRY
CLEANABLE



DO NOT
TUMBLE DRY







JACKET: 30703 / TROUSERS: 08360

Men's Chef Two Piece Suit

SABS
ISO 9001

SANS 1387



- Classic double breasted chef jacket with checkered or plain pant

Fabric

J54 - 100% Cotton

Sizes

S - 3XL

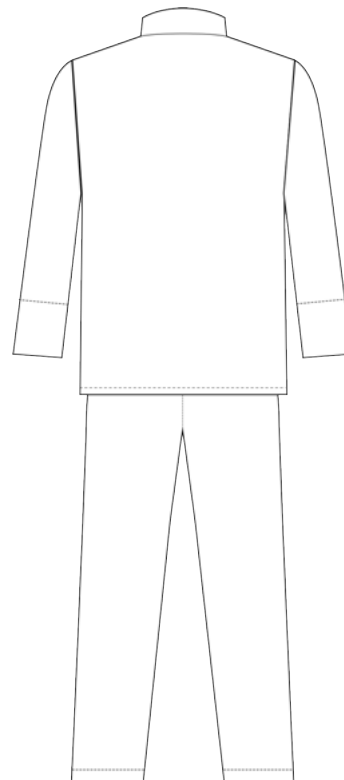
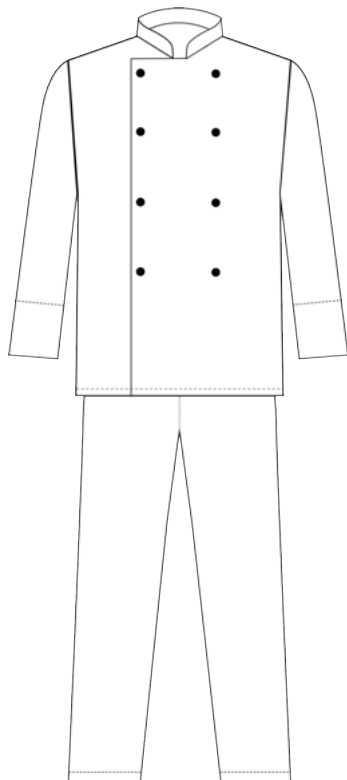
Weight

220gsm

Colours

White jacket, chefs check pant or black pant

Washing Instructions



SAFETY FIRST.

When out on the job it is important to be the solution, not the problem. Minimise the potential for casualties on every occasion with protective workwear that enables flexibility and supports agility.

Sweet-Orr flight-suits are carefully designed with pocketing detail perfect for multi-purpose use, allowing you to prepare for the unexpected. Our protective clothing is made from heavy-duty, high-performance fabric to ensure that form never hinders function.

With the tension and stress to your mind and body that may come with completing a job, your garment is designed to endure - giving you confidence to cope in high-intensity situations.





02179

Men's Club Collar Zip Through Boilersuit

SABS
ISO 9001

SANS 1387

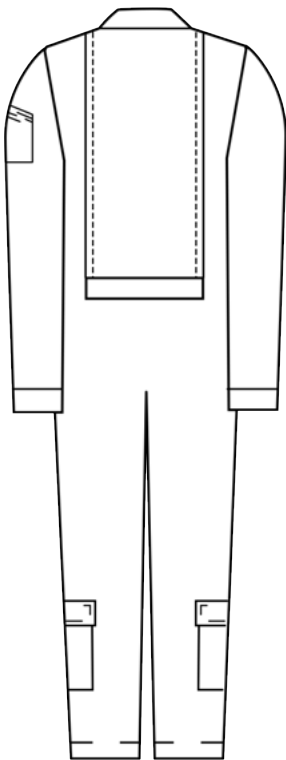
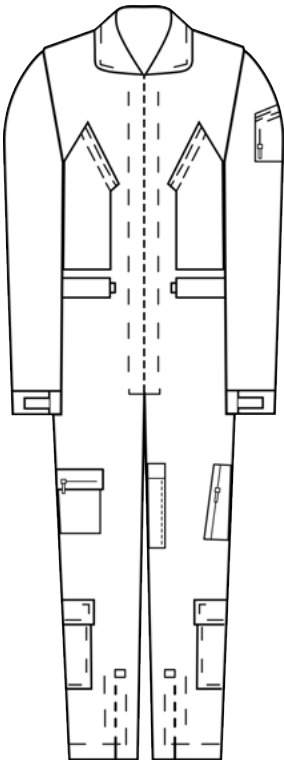


- One piece boilersuit with club collar
- Adjustable cuffs with velcro
- Angled breast pocket with zip closure
- Tunnel back waistband with functional elasticated detail and adjustable velcro for closure
- Knee detailed pockets with zip closure
- Adjustable hem with zip detail
- Back pleats for ease when moving

Fabric	Sizes	Weight
J54 - 100% Cotton	72 - 172	220gsm
D59 - 100% Cotton		270gsm
D59 - 100% Cotton flame retardant		315gsm

Colours (3)
Navy, Khaki, Black

Washing Instructions





02180

Men's Drawstring Cuffed Hem with Lapel Detail Boilersuit

SABS
ISO 9001

SANS 1387



- Long sleeve with button closure cuffs
- 2 breast pockets with button closure
- 2 side entry pockets
- Reinforced elbows, knees and seat with self fabric
- Centre front zip detail
- Drawcord at hem

Fabric

J54 - 100% Cotton

D59 - 100% Cotton

D59 - 100% Cotton flame retardant

Sizes

72 - 172

Weight

220gsm

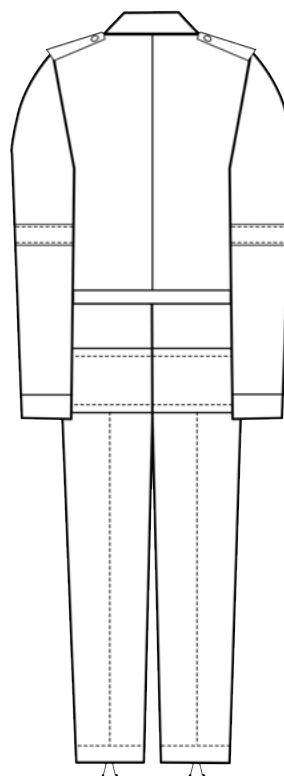
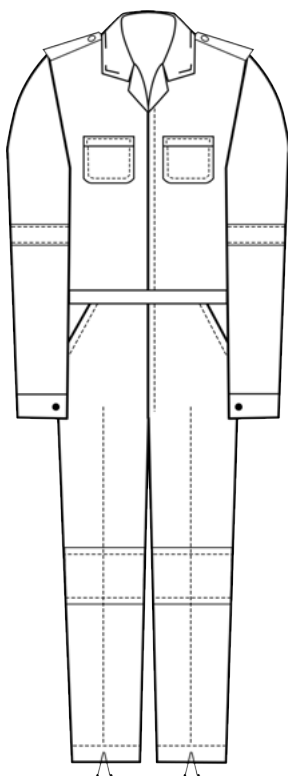
270gsm

315gsm

Colours (3)

Navy, Khaki, Black

Washing Instructions





02181

Men's Cuffed Sleeve Boilersuit with Epaulette Detail

SABS
ISO 9001

SANS 1387



- Long sleeve with elasticated cuffs
- 2 breast pockets with flaps and press stud closure
- 2 side pockets with side vents
- Hip and rule pockets
- Button fly

Fabric

J54 - 100% Cotton
D59 - 100% Cotton
D59 - 100% Cotton flame retardant

Sizes

72 - 172

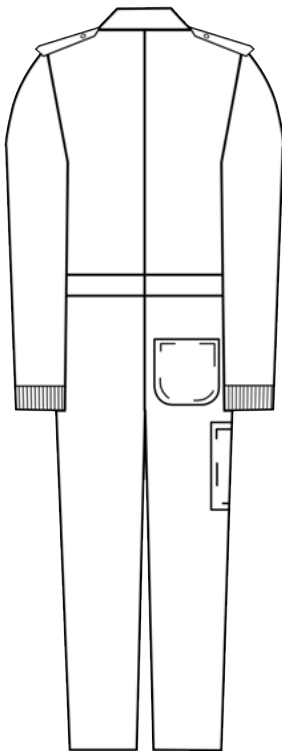
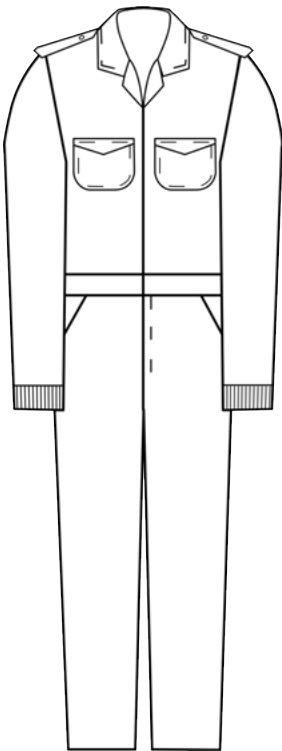
Weight

220gsm
270gsm
315gsm

Colours (3)

Navy, Khaki, Black

Washing Instructions





02182

Men's Visible Zip Detail Boilersuit with Velcro at Hems & Cuffs

SABS
ISO 9001

SANS 1387



- Long sleeve with plain cuffs and velcro closure
- 2 angled pockets with zip closure
- Pocket on sleeve pencil division and zip closure
- 2 side pockets
- Pockets on the outer leg
- Zip fly

Fabric

J54 - 100% Cotton

D59 - 100% Cotton

D59 - 100% Cotton flame retardant

Sizes

72 - 172

Weight

220gsm

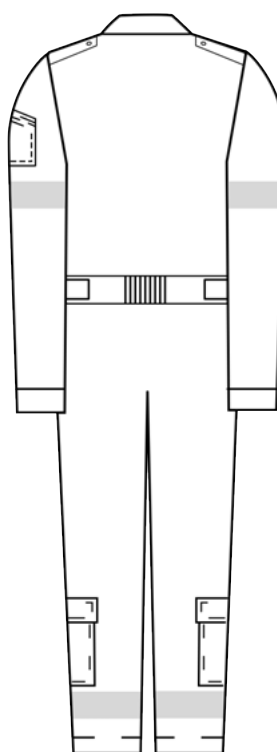
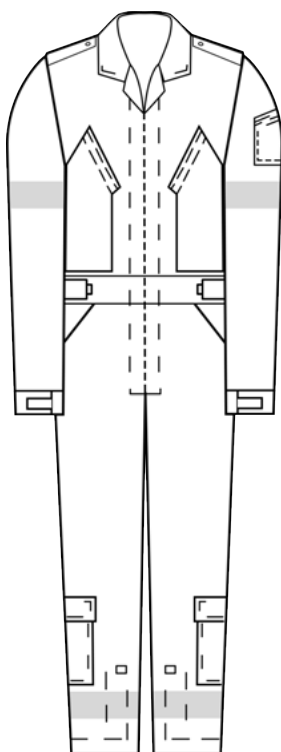
270gsm

315gsm

Colours (3)

Navy, Khaki, Black

Washing Instructions







50273

Combat Shirt

SABS
ISO 9001

SANS 1387



- Long sleeve button through shirt
- with epaulette detail
- Button closure at breast pockets and button closure at cuffs
- Back yoke

Fabric

J54 - 100% Cotton

Sizes

S - 3XL

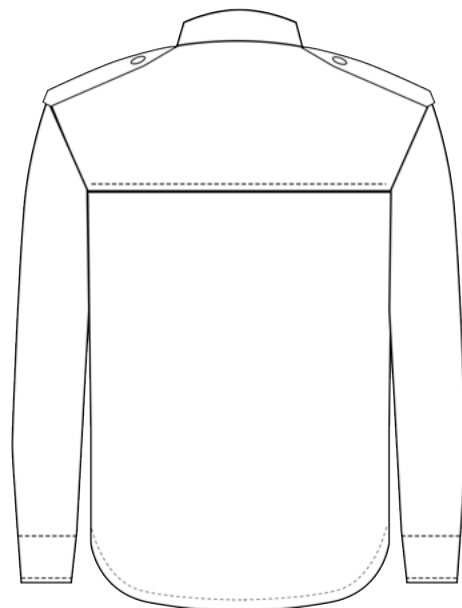
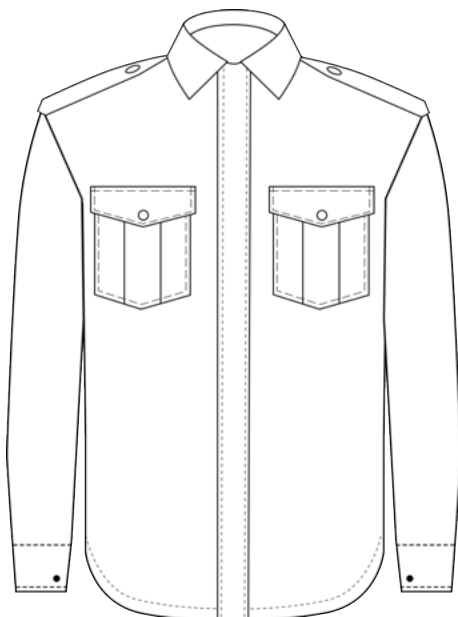
Weight

220gsm

Colours (3)

Navy, Khaki, Black

Washing Instructions





60141

Combat Pant

SABS
ISO 9001

SANS 1387



- Side entry pocket
- Flap patch pockets with button closure
- Back pockets with flap and button closure
- Pin tuck on front leg and cuffed hem
- Waistband with extended beltloops
- Elasticised for pants

Fabric

J54 - 100% Cotton

Sizes

72 - 172

Weight

220gsm

Colours (3)

Navy, Khaki, Black

Washing Instructions



HOT
WASH



DO NOT
BLEACH



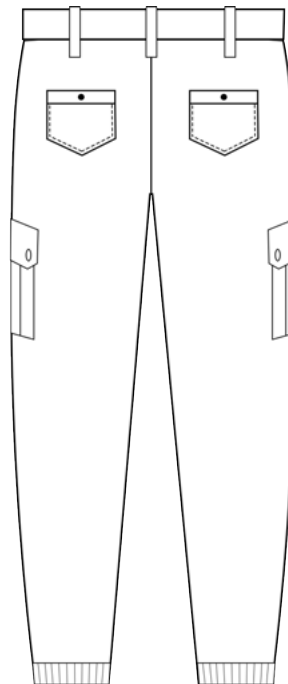
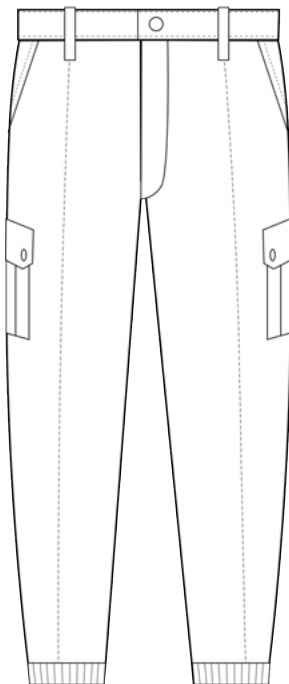
WARM IRON
WHEN DAMP



DRY
CLEANABLE



DO NOT
TUMBLE DRY



SHARING ARTISTRY AND DEVOTION TO
**HARDWEARING
WORKWEAR**
SINCE 1871.



SWEET-ORR
WE NEVER LET YOU DOWN



EST 1871

Contact Details

Our state of the art factory makes us the leading manufacturer of protective clothing in South Africa. We continually strive to match our service to our quality levels and our loyal and long-serving agents are totally committed to the motto:

“WE NEVER LET YOU DOWN”

Cape Town Head Office

16th Street, Elsies River, Cape Town, 7490, South Africa
+27 21 932 6921

Johannesburg Regional Office

15 Susan St, Randburg, Gauteng, 2194, South Africa
+27 11 791 3160

Sweet-Orr is a Level 2 B-BBEE Supplier
REG. NO 1997/018873/07

www.sweet-orr.co.za

SWEET-ORR
WE NEVER LET YOU DOWN



Sweet-Orr is the global leader in protective workwear.

Our products offer superior protection in some of
the most hazardous environments.

The toughest conditions require the toughest garments.

As such, our workwear works as hard as you do.
Driven by service and passion, our garments are crafted
on the promise of quality.

www.sweet-orr.co.za